

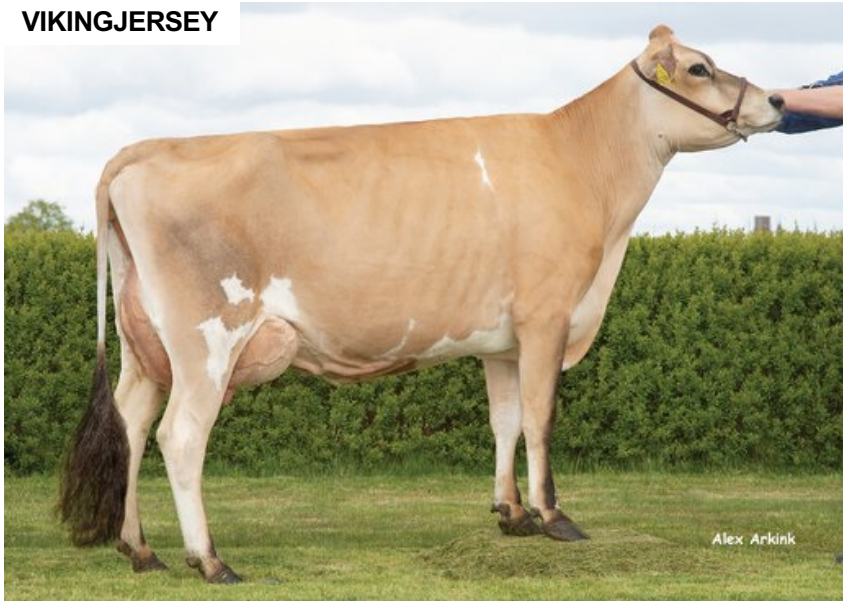
VJ Ribe

DNK 304958

Beta casein: A2A2 Kappa casein: AB aAa: 423
 DOB.: 21/11/2019 VJ Dandi x VJ Livius x VJ Pick
 Proven Polled: POF



VIKINGJERSEY



NTM 13

RECOMMENDED FOR

- HEALTH • MILK • CALVING EASE
- HOOF HEALTH

Dam of VJ Ribe

Dam average (305 days) 9705 kg 5.06 % F / 492 kgF 3.85 % P / 374 kgP
Est. dtr. average (305 days) 8141 kg 5.75 % F / 469 kgF 4.14 % P / 337 kgP

NTM July 2024

PRODUCTION & EFFICIENCY NO. OF DTRS 239 REL 92%

	90	100	110	120
Production	110			
Milk kg	117			
Protein kg	109			
Protein %	81			
Fat, kg	113			
Fat, %	91			
Growth	108			
Saved feed	94			
Persistency	89			

FUNCTIONAL NO. OF DTRS 148 REL 85%

	90	100	110	120
Daughter fertility	95			
Calving sire	107			
Calving maternal	103			
Udder health	111			
General health	103			
Longevity	104			
Hoof health	110			
Youngstock survival	114			
Milkability	91			
Temperament	111			

OVERALL CONFORMATION NO. OF DTRS 54 REL 74%

	90	100	110	120
Frame	119			
Feet & legs	95			
Udder	98			

CONFORMATION

	80	90	100	110	120
Stature	Short				Tall 117
Rib structure	Coarse				Angular 113
Chest width	Narrow				Wide 105
Body depth	Shallow				Deep 114
Rump width	Narrow pins				Wide pins 116
Rump angle	High pins				Low pins 116
Top line	Weak				Strong 116
Rear legs, side view	Straight				Sickled 98
Rear legs, rear view	Toes out				Parallel 94
Foot angle	Low				Steep 103
Bone quality	Coarse				Fine and thin 94
Hock quality	Filled				Dry 92
Fore udder attachme...	Loose				Strong 98
Rear udder height	Low				High 109
Rear udder width	Narrow				Wide 103
Udder support	Weak				Strong 95
Udder depth	Deep				High 99
Udder balance	Deep rear				Deep front 96
Teat length	Short				Long 97
Teat thickness	Thin				Thick 105
Teat placement (front)	Wide				Close 111
Teat placement (back)	Wide				Close 110