

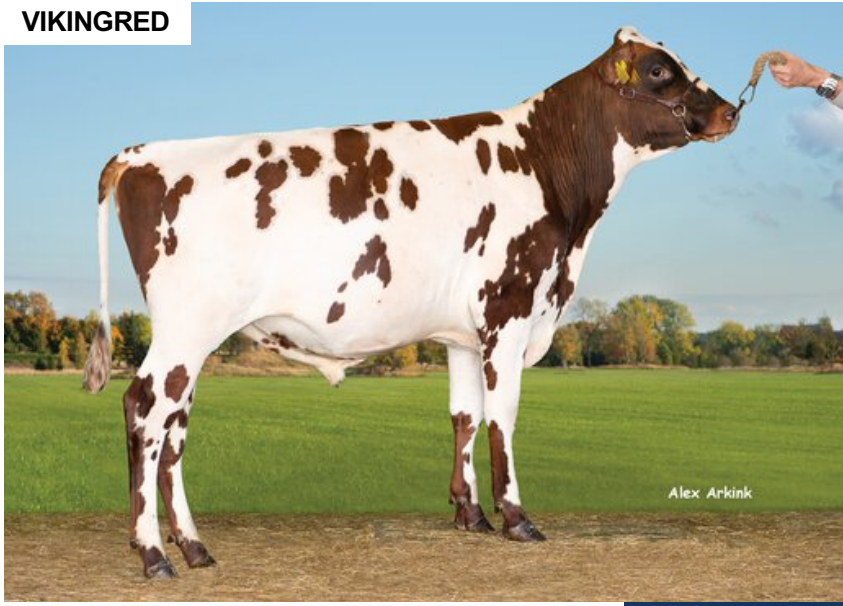
VR Vimma

FIN 48411

Beta casein: A1A2 Kappa casein: AA aAa: 345
 DOB.: 27/12/2019 VR Vimo x VR Emir x VR Taco
 Genomic Polled: POF



VIKINGRED



NTM 16

RECOMMENDED FOR

- SOLIDS • PROCROSS LIQUID
- PROCROSS SOLIDS

Dam average (305 days) Data not available
 Est. dtr. average (305 days) 9690 kg 4.63 % F / 445 kgF 3.76 % P / 363 kgP

NTM June 2024

PRODUCTION & EFFICIENCY NO. OF DTRS 62 REL 85%

		90	100	110	120
Production	109				
Milk kg	97				
Protein kg	105				
Protein %	115				
Fat, kg	108				
Fat, %	113				
Growth	110				
Saved feed	79				
Persistency	91				

FUNCTIONAL NO. OF DTRS 23 REL 83%

		90	100	110	120
Daughter fertility	104				
Calving sire	96				
Calving maternal	113				
Udder health	108				
General health	101				
Longevity	99				
Hoof health	92				
Youngstock survival	106				
Milkability	106				
Temperament	102				

OVERALL CONFORMATION NO. OF DTRS 13 REL 61%

		90	100	110	120
Frame	119				
Feet & legs	93				
Udder	112				

CONFORMATION

		80	90	100	110	120		
Stature	Short						Tall	117
Rib structure	Coarse						Angular	105
Chest width	Narrow						Wide	117
Body depth	Shallow						Deep	113
Rump width	Narrow pins						Wide pins	107
Rump angle	High pins						Low pins	106
Top line	Weak						Strong	99
Rear legs, side view	Straight						Sickled	95
Rear legs, rear view	Toes out						Parallel	93
Foot angle	Low						Steep	106
Bone quality	Coarse						Fine and thin	92
Hock quality	Filled						Dry	95
Fore udder attachme...	Loose						Strong	104
Rear udder height	Low						High	100
Rear udder width	Narrow						Wide	103
Udder support	Weak						Strong	99
Udder depth	Deep						High	112
Udder balance	Deep rear						Deep front	112
Teat length	Short						Long	117
Teat thickness	Thin						Thick	104
Teat placement (front)	Wide						Close	96
Teat placement (back)	Wide						Close	89