

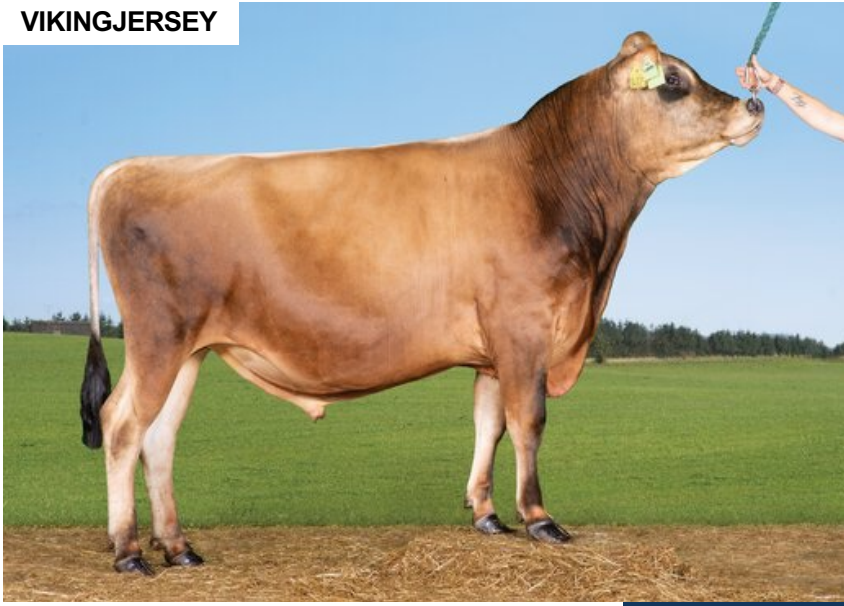
# VJ Luxury

DNK 305011

Beta casein: A2A2 Kappa casein: BB aAa: 516  
 DOB.: 28/04/2020 VJ Luxi x VJ Bonne x VJ Hazard  
 Proven Polled: POF



## VIKINGJERSEY



## NTM 9

RECOMMENDED FOR

- MILK • HOOF HEALTH

Dam average (305 days) 8895 kg 5.75 % F / 512 kgF 4.38 % P / 390 kgP  
 Est. dtr. average (305 days) 7950 kg 5.99 % F / 474 kgF 4.37 % P / 347 kgP

### NTM March 2026

#### PRODUCTION & EFFICIENCY NO. OF DTRS 1459 REL 99%

	90	100	110	120
Production	110			
Milk kg	106			
Protein kg	109			
Protein %	100			
Fat, kg	110			
Fat, %	100			
Growth	120			
Saved feed	111			
Persistency	90			

#### FUNCTIONAL NO. OF DTRS 1376 REL 96%

	90	100	110	120
Daughter fertility	91			
Calving sire	115			
Calving maternal	97			
Udder health	110			
General health	98			
Longevity	95			
Hoof health	105			
Youngstock survival	117			
Milkability	76			
Temperament	108			

#### OVERALL CONFORMATION NO. OF DTRS 555 REL 91%

	90	100	110	120
Frame	102			
Feet & legs	86			
Udder	88			

#### CONFORMATION

	80	90	100	110	120
Stature	Short				Tall 92
Rib structure	Coarse				Angular 110
Chest width	Narrow				Wide 89
Body depth	Shallow				Deep 98
Rump width	Narrow pins				Wide pins 102
Rump angle	High pins				Low pins 87
Top line	Weak				Strong 91
Rear legs, side view	Straight				Sickled 116
Rear legs, rear view	Toes out				Parallel 125
Foot angle	Low				Steep 95
Bone quality	Coarse				Fine and thin 86
Hock quality	Filled				Dry 73
Fore udder attachme...	Loose				Strong 93
Rear udder height	Low				High 110
Rear udder width	Narrow				Wide 115
Udder support	Weak				Strong 95
Udder depth	Deep				High 79
Udder balance	Deep rear				Deep front 102
Teat length	Short				Long 100
Teat thickness	Thin				Thick 109
Teat placement (front)	Wide				Close 104
Teat placement (back)	Wide				Close 103