

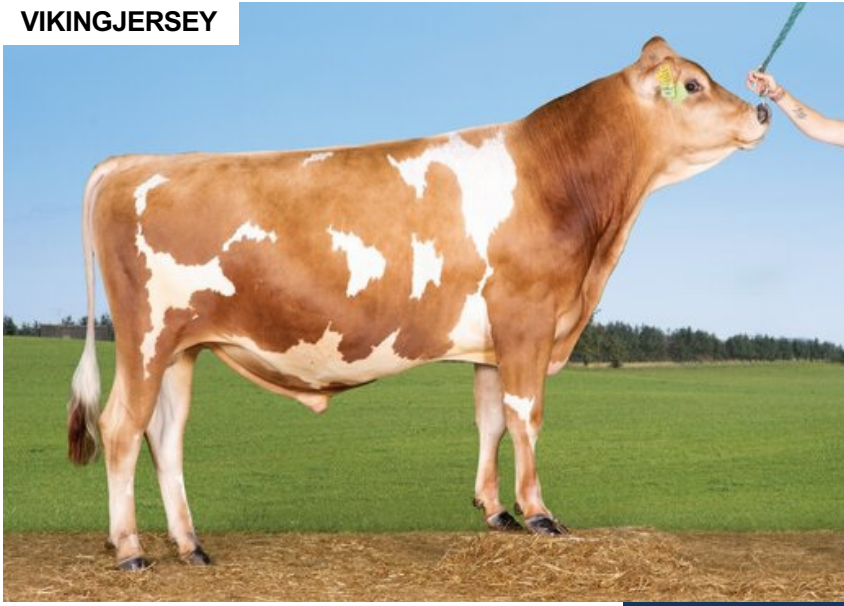
VJ Luxplus

DNK 305013

Beta casein: A2A2 Kappa casein: BB aAa: 561
 DOB.: 21/05/2020 VJ Luxi x VJ Samson x VJ Link
 Proven Polled: POF



VIKINGJERSEY



NTM 15

RECOMMENDED FOR

- MILK
- CALVING EASE

Dam average (305 days) 6529 kg 6.1 % F / 398 kgF 4.38 % P / 286 kgP
 Est. dtr. average (305 days) 8028 kg 5.98 % F / 479 kgF 4.35 % P / 349 kgP

NTM March 2025

PRODUCTION & EFFICIENCY NO. OF DTRS 239 REL 94%

		90	100	110	120
Production	121				+
Milk kg	111				
Protein kg	118				
Protein %	102				
Fat, kg	119				
Fat, %	100				
Growth	108				
Saved feed	113				
Persistency	101				

FUNCTIONAL NO. OF DTRS 180 REL 76%

		90	100	110	120
Daughter fertility	84				
Calving sire	116				
Calving maternal	104				
Udder health	96				
General health	107				
Longevity	108				
Hoof health	76				
Youngstock survival	122				+
Milkability	98				
Temperament	93				

OVERALL CONFORMATION NO. OF DTRS 83 REL 79%

		90	100	110	120
Frame	94				
Feet & legs	108				
Udder	91				

CONFORMATION

		80	90	100	110	120
Stature	Short					Tall 89
Rib structure	Coarse					Angular 99
Chest width	Narrow					Wide 95
Body depth	Shallow					Deep 93
Rump width	Narrow pins					Wide pins 87
Rump angle	High pins					Low pins 88
Top line	Weak					Strong 88
Rear legs, side view	Straight					Sickled 105
Rear legs, rear view	Toes out					Parallel 123
Foot angle	Low					Steep 104
Bone quality	Coarse					Fine and thin 104
Hock quality	Filled					Dry 96
Fore udder attachme...	Loose					Strong 99
Rear udder height	Low					High 95
Rear udder width	Narrow					Wide 98
Udder support	Weak					Strong 98
Udder depth	Deep					High 90
Udder balance	Deep rear					Deep front 101
Teat length	Short					Long 96
Teat thickness	Thin					Thick 96
Teat placement (front)	Wide					Close 110
Teat placement (back)	Wide					Close 101