

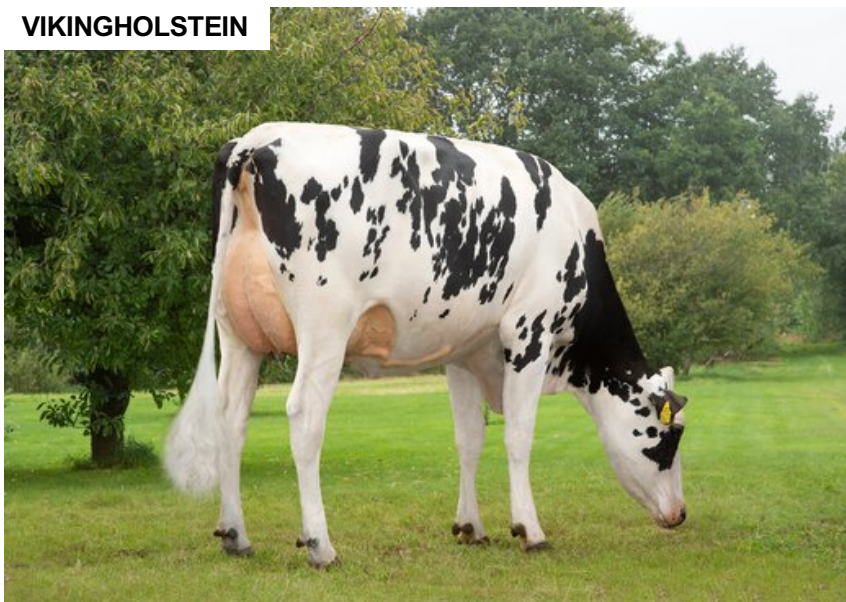
VH Swish

SWE 45170

Beta casein: A2A2 Kappa casein: BB aAa: 423
 DOB.: 28/05/2020 VH Spruce x VH Nerd RC x VH Blogg
 Proven Polled: POF



VIKINGHOLSTEIN



NTM 28

RECOMMENDED FOR

- GRAZING • SOLIDS • FERTILITY
- HOOF HEALTH • PROCROSS SOLIDS

Daughter of VH Swish

Dam average (305 days) 7493 kg 5.75 % F / 431 kgF 3.98 % P / 298 kgP
Est. dtr. average (305 days) 11437 kg 4.41 % F / 493 kgF 3.68 % P / 416 kgP

NTM October 2024

PRODUCTION & EFFICIENCY NO. OF DTRS 376 REL 93%

	90	100	110	120
Production	123			+
Milk kg	100			
Protein kg	117			
Protein %	125			+
Fat, kg	121			+
Fat, %	118			
Growth	106			
Saved feed	109			
Persistency	106			

FUNCTIONAL NO. OF DTRS 214 REL 85%

	90	100	110	120
Daughter fertility	107			
Calving sire	102			
Calving maternal	101			
Udder health	98			
General health	107			
Longevity	103			
Hoof health	108			
Youngstock survival	114			
Milkability	105			
Temperament	105			

OVERALL CONFORMATION NO. OF DTRS 71 REL 81%

	90	100	110	120
Frame	101			
Feet & legs	96			
Udder	98			

CONFORMATION

	80	90	100	110	120
Stature	Short				Tall 99
Rib structure	Coarse				Angular 93
Chest width	Narrow				Wide 109
Body depth	Shallow				Deep 100
Rump width	Narrow pins				Wide pins 100
Rump angle	High pins				Low pins 92
Top line	Weak				Strong 91
Rear legs, side view	Straight				Sickled 117
Rear legs, rear view	Toes out				Parallel 90
Foot angle	Low				Steep 100
Bone quality	Coarse				Fine and thin 99
Hock quality	Filled				Dry 111
Fore udder attachme...	Loose				Strong 112
Rear udder height	Low				High 92
Rear udder width	Narrow				Wide 93
Udder support	Weak				Strong 102
Udder depth	Deep				High 98
Udder balance	Deep rear				Deep front 117
Teat length	Short				Long 113
Teat thickness	Thin				Thick 125
Teat placement (front)	Wide				Close 108
Teat placement (back)	Wide				Close 107