

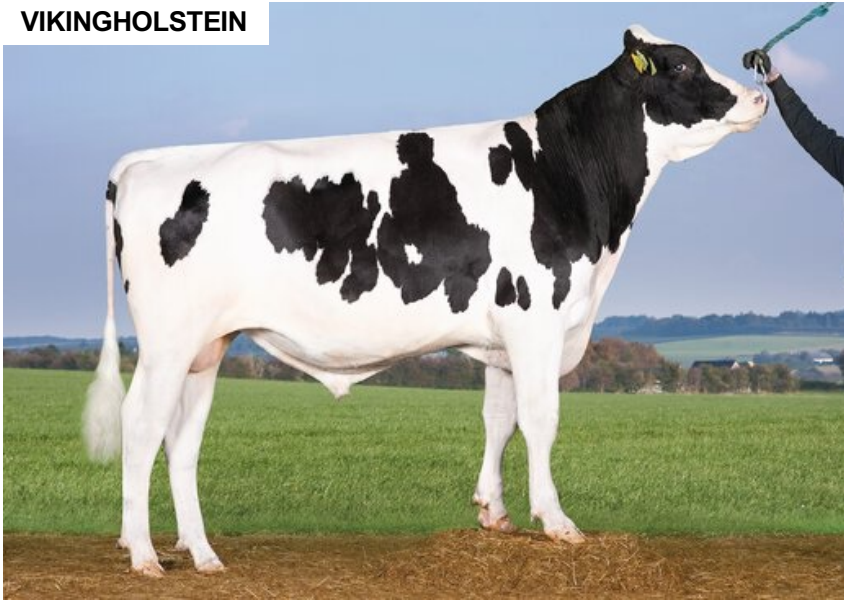
VH Yde

DNK 261792

Beta casein: A1A2 Kappa casein: BB aAa: 423
 DOB.: 09/09/2020 Youngster x Praser x VH Reynold
 Proven Polled: POF



VIKINGHOLSTEIN



NTM 23

RECOMMENDED FOR

- GRAZING • ROBOT • SOLIDS
- FERTILITY

Dam average (305 days) 8316 kg 4.83 % F / 402 kgF 3.77 % P / 313 kgP
 Est. dtr. average (305 days) 11834 kg 4.35 % F / 505 kgF 3.65 % P / 428 kgP

NTM April 2026

PRODUCTION & EFFICIENCY		NO. OF DTRS 2789		REL 99%	
		90	100	110	120
Production	119				
Milk kg	104				
Protein kg	115				
Protein %	114				
Fat, kg	118				
Fat, %	111				
Growth	125				+
Saved feed	87				
Persistency	98				

FUNCTIONAL		NO. OF DTRS 2582		REL 98%	
		90	100	110	120
Daughter fertility	115				
Calving sire	101				
Calving maternal	97				
Udder health	103				
General health	94				
Longevity	97				
Hoof health	104				
Youngstock survival	104				
Milkability	106				
Temperament	85				

OVERALL CONFORMATION		NO. OF DTRS 905		REL 93%	
		90	100	110	120
Frame	102				
Feet & legs	98				
Udder	101				

CONFORMATION		80 90 100 110 120				
Stature	Short					Tall 106
Rib structure	Coarse					Angular 101
Chest width	Narrow					Wide 92
Body depth	Shallow					Deep 97
Rump width	Narrow pins					Wide pins 110
Rump angle	High pins					Low pins 113
Top line	Weak					Strong 89
Rear legs, side view	Straight					Sickled 87
Rear legs, rear view	Toes out					Parallel 100
Foot angle	Low					Steep 111
Bone quality	Coarse					Fine and thin 98
Hock quality	Filled					Dry 95
Fore udder attachme...	Loose					Strong 106
Rear udder height	Low					High 93
Rear udder width	Narrow					Wide 101
Udder support	Weak					Strong 96
Udder depth	Deep					High 101
Udder balance	Deep rear					Deep front 87
Teat length	Short					Long 102
Teat thickness	Thin					Thick 108
Teat placement (front)	Wide					Close 115
Teat placement (back)	Wide					Close 102