

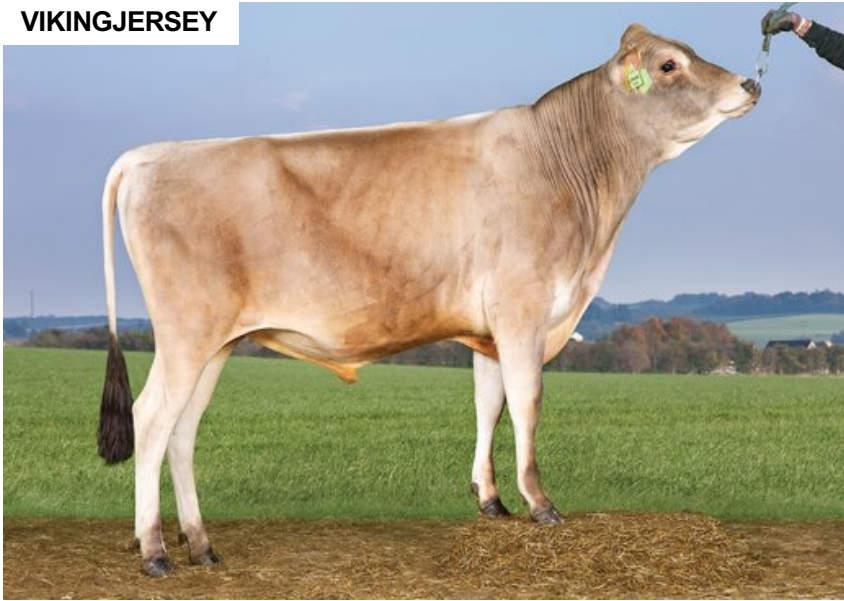
# VJ Leblanc

DNK 305124

Beta casein: A2A2 Kappa casein: AB aAa: 426  
 DOB.: 16/02/2021 VJ Lemon x VJ Bonne x VJ Hoj  
 Genomic Polled: POF



## VIKINGJERSEY



## NTM 12

### RECOMMENDED FOR

- SOLIDS • FERTILITY

Dam average (305 days) 8900 kg 6.3 % F / 560 kgF 4.57 % P / 407 kgP  
 Est. dtr. average (305 days) 7569 kg 6.19 % F / 463 kgF 4.42 % P / 333 kgP

### NTM May 2025

#### PRODUCTION & EFFICIENCY NO. OF DTRS 20 REL 89%

		90	100	110	120
Production	104				
Milk kg	95				
Protein kg	100				
Protein %	109				
Fat, kg	104				
Fat, %	108				
Growth	98				
Saved feed	100				
Persistency	105				

#### FUNCTIONAL NO. OF DTRS 6 REL 75%

		90	100	110	120
Daughter fertility	114				
Calving sire	89				
Calving maternal	108				
Udder health	112				
General health	99				
Longevity	103				
Hoof health	90				
Youngstock survival	94				
Milkability	105				
Temperament	98				

#### OVERALL CONFORMATION NO. OF DTRS 7 REL 59%

		90	100	110	120
Frame	93				
Feet & legs	96				
Udder	107				

#### CONFORMATION

		80	90	100	110	120
Stature	Short					Tall 99
Rib structure	Coarse					Angular 106
Chest width	Narrow					Wide 96
Body depth	Shallow					Deep 84
Rump width	Narrow pins					Wide pins 97
Rump angle	High pins					Low pins 87
Top line	Weak					Strong 96
Rear legs, side view	Straight					Sickled 119
Rear legs, rear view	Toes out					Parallel 114
Foot angle	Low					Steep 92
Bone quality	Coarse					Fine and thin 104
Hock quality	Filled					Dry 103
Fore udder attachme...	Loose					Strong 108
Rear udder height	Low					High 95
Rear udder width	Narrow					Wide 93
Udder support	Weak					Strong 93
Udder depth	Deep					High 114
Udder balance	Deep rear					Deep front 105
Teat length	Short					Long 95
Teat thickness	Thin					Thick 94
Teat placement (front)	Wide					Close 110
Teat placement (back)	Wide					Close 98