

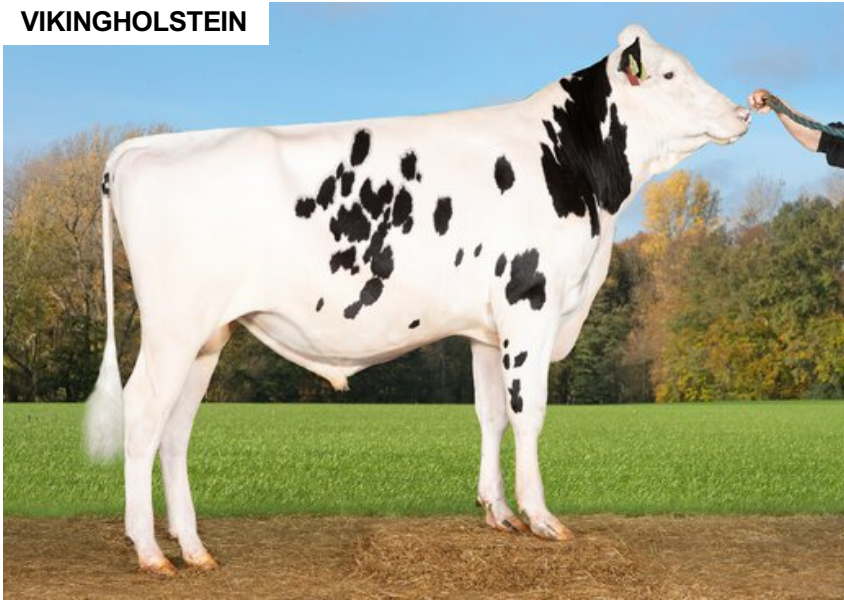
# VH Fiini

FIN 60087

Beta casein: A2A2 Kappa casein: AB aAa: 243  
 DOB.: 22/09/2021 VH Finish x VH Beluga x VH Sparky  
 Genomic Polled: POF



## VIKINGHOLSTEIN



## NTM 23

### RECOMMENDED FOR

- MILK • SOLIDS • HOOF HEALTH
- PROCROSS LIQUID

Dam average (305 days) 12972 kg 4.55 % F / 591 kgF 3.98 % P / 516 kgP  
 Est. dtr. average (305 days) 12063 kg 4.27 % F / 507 kgF 3.63 % P / 434 kgP

### NTM March 2026

#### PRODUCTION & EFFICIENCY NO. OF DTRS 53 REL 95%

		90	100	110	120	
Production	122					+
Milk kg	111					
Protein kg	121					+
Protein %	111					
Fat, kg	119					
Fat, %	106					
Growth	100					
Saved feed	101					
Persistency	103					

#### FUNCTIONAL NO. OF DTRS 14 REL 88%

		90	100	110	120	
Daughter fertility	96					
Calving sire	103					
Calving maternal	97					
Udder health	101					
General health	106					
Longevity	106					
Hoof health	114					
Youngstock survival	106					
Milkability	89					
Temperament	91					

#### OVERALL CONFORMATION NO. OF DTRS 6 REL 71%

		90	100	110	120	
Frame	108					
Feet & legs	108					
Udder	112					

#### CONFORMATION

		80	90	100	110	120	
Stature	Short						Tall 105
Rib structure	Coarse						Angular 103
Chest width	Narrow						Wide 107
Body depth	Shallow						Deep 107
Rump width	Narrow pins						Wide pins 101
Rump angle	High pins						Low pins 114
Top line	Weak						Strong 101
Rear legs, side view	Straight						Sickled 100
Rear legs, rear view	Toes out						Parallel 100
Foot angle	Low						Steep 102
Bone quality	Coarse						Fine and thin 110
Hock quality	Filled						Dry 109
Fore udder attachme...	Loose						Strong 111
Rear udder height	Low						High 126
Rear udder width	Narrow						Wide 117
Udder support	Weak						Strong 95
Udder depth	Deep						High 106
Udder balance	Deep rear						Deep front 101
Teat length	Short						Long 102
Teat thickness	Thin						Thick 110
Teat placement (front)	Wide						Close 89
Teat placement (back)	Wide						Close 96