

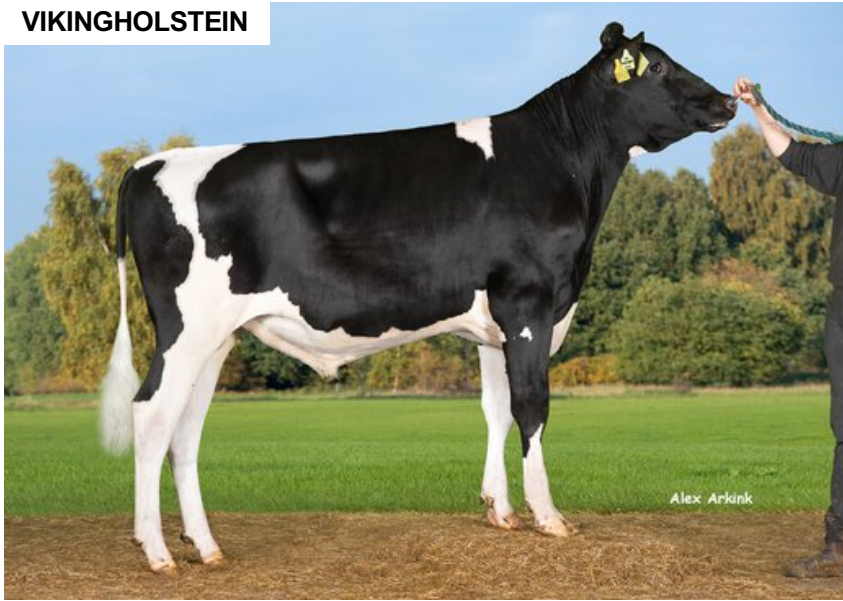
VH Nalegro

DNK 262385

Beta casein: A2A2 Kappa casein: AB aAa: 243
 DOB.: 02/10/2021 VH Newstar x VH Hotman x VH Griffin
 Proven Polled: POF



VIKINGHOLSTEIN



Alex Arkink

NTM 22

RECOMMENDED FOR

- GRAZING • SOLIDS • FERTILITY
- HOOF HEALTH • VIKINGGOLDENCROSS

Dam average (305 days) 9937 kg 3.86 % F / 384 kgF 3.68 % P / 366 kgP
 Est. dtr. average (305 days) 11834 kg 4.4 % F / 509 kgF 3.62 % P / 425 kgP

NTM April 2026

PRODUCTION & EFFICIENCY NO. OF DTRS 536 REL 99%

		90	100	110	120
Production	119				
Milk kg	104				
Protein kg	112				
Protein %	110				
Fat, kg	121				+
Fat, %	114				
Growth	102				
Saved feed	103				
Persistency	113				

FUNCTIONAL NO. OF DTRS 329 REL 89%

		90	100	110	120
Daughter fertility	108				
Calving sire	103				
Calving maternal	105				
Udder health	101				
General health	102				
Longevity	108				
Hoof health	108				
Youngstock survival	73				
Milkability	101				
Temperament	88				

OVERALL CONFORMATION NO. OF DTRS 47 REL 81%

		90	100	110	120
Frame	100				
Feet & legs	102				
Udder	110				

CONFORMATION

		80	90	100	110	120
Stature	Short					Tall 106
Rib structure	Coarse					Angular 103
Chest width	Narrow					Wide 83
Body depth	Shallow					Deep 97
Rump width	Narrow pins					Wide pins 113
Rump angle	High pins					Low pins 106
Top line	Weak					Strong 92
Rear legs, side view	Straight					Sickled 94
Rear legs, rear view	Toes out					Parallel 95
Foot angle	Low					Steep 102
Bone quality	Coarse					Fine and thin 110
Hock quality	Filled					Dry 106
Fore udder attachme...	Loose					Strong 107
Rear udder height	Low					High 113
Rear udder width	Narrow					Wide 102
Udder support	Weak					Strong 106
Udder depth	Deep					High 115
Udder balance	Deep rear					Deep front 111
Teat length	Short					Long 102
Teat thickness	Thin					Thick 108
Teat placement (front)	Wide					Close 101
Teat placement (back)	Wide					Close 106