

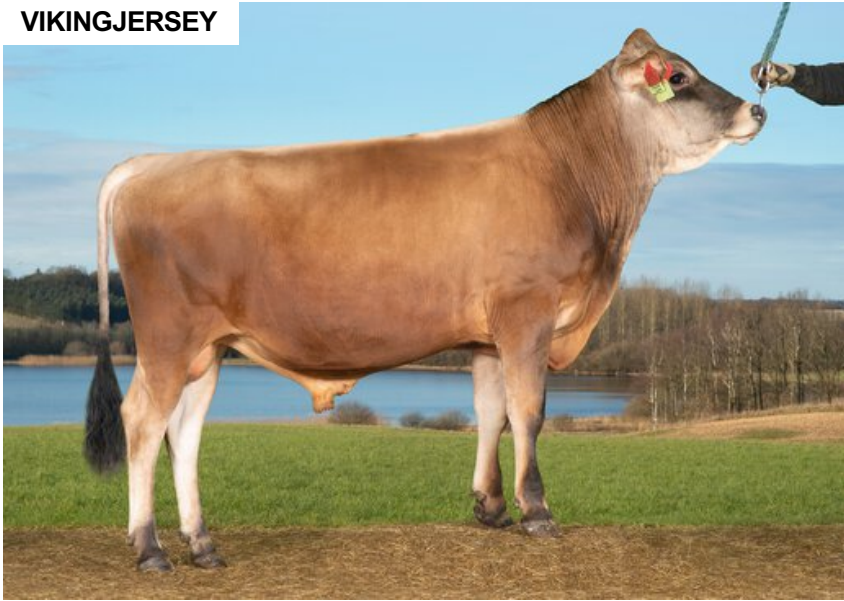
VJ Juke

FIN 582

Beta casein: A2A2 Kappa casein: BB aAa: 615
 DOB.: 20/01/2022 VJ Jake x VJ Hodja x VJ Libero
 Genomic Polled: POF



VIKINGJERSEY



NTM 22

RECOMMENDED FOR

- HEALTH
- MILK
- FERTILITY
- HOOF HEALTH
- ORGANIC

Dam average (305 days) 8023 kg 5.84 % F / 469 kgF 4.61 % P / 370 kgP
 Est. dtr. average (305 days) 7921 kg 6.04 % F / 476 kgF 4.39 % P / 348 kgP

NTM April 2026

PRODUCTION & EFFICIENCY NO. OF DTRS 2 REL 89%

		90	100	110	120
Production	113				
Milk kg	105				
Protein kg	110				
Protein %	102				
Fat, kg	112				
Fat, %	102				
Growth	99				
Saved feed	99				
Persistency	104				

FUNCTIONAL NO. OF DTRS 1 REL 74%

		90	100	110	120
Daughter fertility	114				
Calving sire	89				
Calving maternal	98				
Udder health	110				
General health	104				
Longevity	107				
Hoof health	106				
Youngstock survival	102				
Milkability	104				
Temperament	110				

OVERALL CONFORMATION REL 58%

		90	100	110	120
Frame	91				
Feet & legs	100				
Udder	107				

CONFORMATION

		80	90	100	110	120
Stature	Short					Tall 105
Rib structure	Coarse					Angular 96
Chest width	Narrow					Wide 103
Body depth	Shallow					Deep 100
Rump width	Narrow pins					Wide pins 97
Rump angle	High pins					Low pins 109
Top line	Weak					Strong 101
Rear legs, side view	Straight					Sickled 90
Rear legs, rear view	Toes out					Parallel 93
Foot angle	Low					Steep 119
Bone quality	Coarse					Fine and thin 87
Hock quality	Filled					Dry 83
Fore udder attachme...	Loose					Strong 112
Rear udder height	Low					High 113
Rear udder width	Narrow					Wide 112
Udder support	Weak					Strong 115
Udder depth	Deep					High 106
Udder balance	Deep rear					Deep front 98
Teat length	Short					Long 86
Teat thickness	Thin					Thick 91
Teat placement (front)	Wide					Close 114
Teat placement (back)	Wide					Close 116