

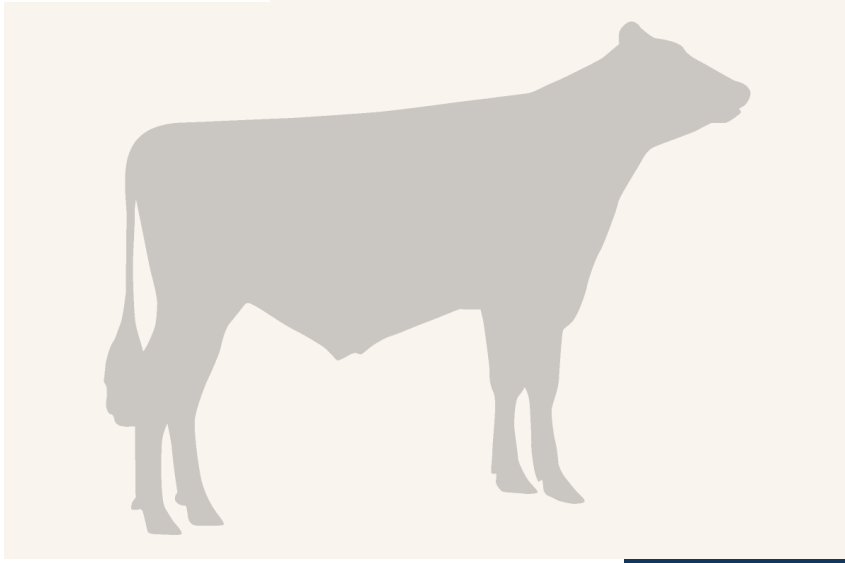
# VH Gizmo

SWE 45034

Kappa casein: AB aAa: 432561  
 DOB.: 24/12/2012 G-Force x D Onside x Ramos  
 Proven



## VIKINGHOLSTEIN



## NTM 5

### RECOMMENDED FOR

- ROBOT
- PROCROSS LIQUID
- PROCROSS SOLIDS

Dam average (305 days) 11859 kg 3.81 % F / 452 kgF 3.17 % P / 376 kgP  
 Est. dtr. average (305 days) 11568 kg 4.19 % F / 478 kgF 3.51 % P / 404 kgP

### NTM June 2024

#### PRODUCTION & EFFICIENCY NO. OF DTRS 3659 REL 99%

		90	100	110	120
Production	108				
Milk kg	104				
Protein kg	105				
Protein %	102				
Fat, kg	109				
Fat, %	104				
Growth	89				
Saved feed	107				
Persistency	108				

#### FUNCTIONAL NO. OF DTRS 3712 REL 99%

		90	100	110	120
Daughter fertility	101				
Calving sire	104				
Calving maternal	91				
Udder health	97				
General health	109				
Longevity	97				
Hoof health	101				
Youngstock survival	84				
Milkability	95				
Temperament	85				

#### OVERALL CONFORMATION NO. OF DTRS 1671 REL 97%

		90	100	110	120
Frame	103				
Feet & legs	108				
Udder	104				

#### CONFORMATION

		80	90	100	110	120
Stature	Short					Tall 111
Rib structure	Coarse					Angular 106
Chest width	Narrow					Wide 92
Body depth	Shallow					Deep 105
Rump width	Narrow pins					Wide pins 92
Rump angle	High pins					Low pins 101
Top line	Weak					Strong 90
Rear legs, side view	Straight					Sickled 86
Rear legs, rear view	Toes out					Parallel 100
Foot angle	Low					Steep 99
Bone quality	Coarse					Fine and thin 106
Hock quality	Filled					Dry 115
Fore udder attachme...	Loose					Strong 102
Rear udder height	Low					High 106
Rear udder width	Narrow					Wide 97
Udder support	Weak					Strong 109
Udder depth	Deep					High 100
Udder balance	Deep rear					Deep front 104
Teat length	Short					Long 92
Teat thickness	Thin					Thick 93
Teat placement (front)	Wide					Close 106
Teat placement (back)	Wide					Close 102