

# VJ Jotur

DNK 303897

Kappa casein: BB

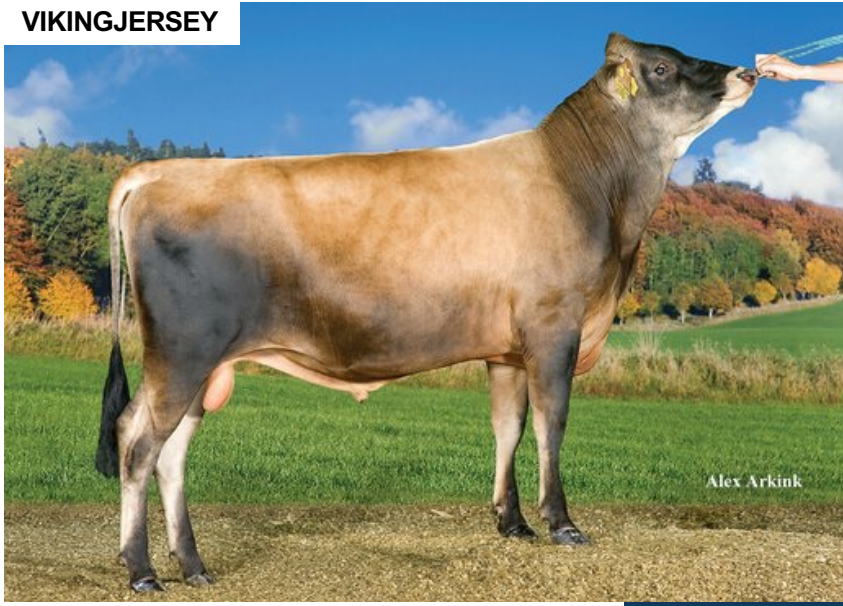
DOB.: 03/06/2013

VJ Jonatan x DJ Hulk x DJ May

Proven



## VIKINGJERSEY



## NTM -7

### RECOMMENDED FOR

- GRAZING
- SOLIDS
- FERTILITY
- CALVING EASE

Dam average (305 days) 8057 kg 6.01 % F / 484 kgF 4.31 % P / 347 kgP  
 Est. dtr. average (305 days) 7367 kg 6.19 % F / 450 kgF 4.39 % P / 322 kgP

### NTM June 2024

PRODUCTION & EFFICIENCY		NO. OF DTRS 104		REL 93%	
		90	100	110	120
Production	94				
Milk kg	90				
Protein kg	91				
Protein %	108				
Fat, kg	95				
Fat, %	108				
Growth	92				
Saved feed	95				
Persistency	83				

FUNCTIONAL		NO. OF DTRS 89		REL 84%	
		90	100	110	120
Daughter fertility	104				
Calving sire	110				
Calving maternal	103				
Udder health	90				
General health	103				
Longevity	100				
Hoof health	101				
Youngstock survival	112				
Milkability	113				
Temperament	109				

OVERALL CONFORMATION		NO. OF DTRS 60		REL 78%	
		90	100	110	120
Frame	102				
Feet & legs	105				
Udder	88				

CONFORMATION		80 90 100 110 120				
Stature	Short					Tall 102
Rib structure	Coarse					Angular 102
Chest width	Narrow					Wide 113
Body depth	Shallow					Deep 110
Rump width	Narrow pins					Wide pins 95
Rump angle	High pins					Low pins 96
Top line	Weak					Strong 94
Rear legs, side view	Straight					Sickled 91
Rear legs, rear view	Toes out					Parallel 99
Foot angle	Low					Steep 108
Bone quality	Coarse					Fine and thin 91
Hock quality	Filled					Dry 100
Fore udder attachme...	Loose					Strong 93
Rear udder height	Low					High 85
Rear udder width	Narrow					Wide 93
Udder support	Weak					Strong 110
Udder depth	Deep					High 88
Udder balance	Deep rear					Deep front 96
Teat length	Short					Long 99
Teat thickness	Thin					Thick 88
Teat placement (front)	Wide					Close 96
Teat placement (back)	Wide					Close 94