

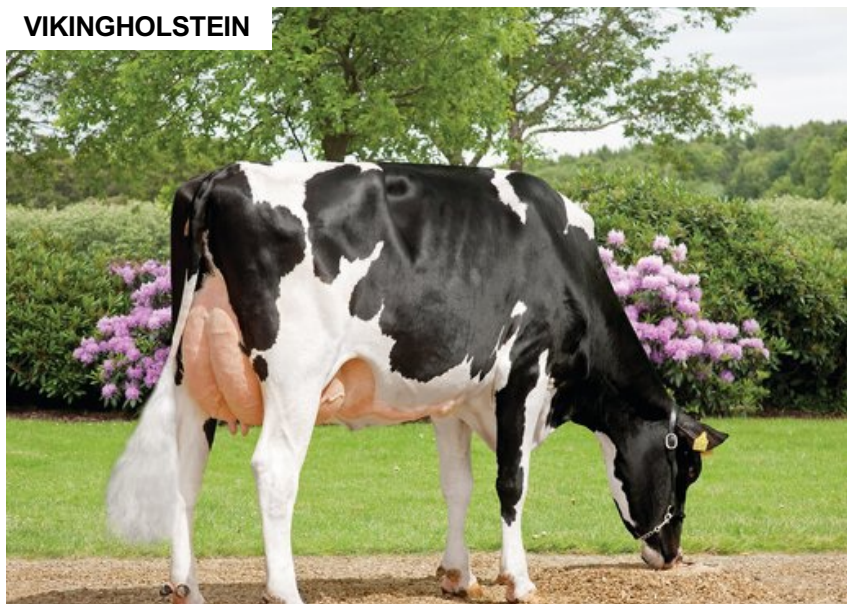
D Orange

DNK 249155

Beta casein: A2A2 Kappa casein: AB aAa: 135246
 DOB.: 05/07/2004 Oman Justi x T Funkis x HJ Vogd
 Proven



VIKINGHOLSTEIN



Daughter of D Orange

NTM -13

Dam average (305 days) 12997 kg 4.2 % F / 546 kgF 3.4 % P / 441 kgP
Est. dtr. average (305 days) 11442 kg 4.01 % F / 458 kgF 3.49 % P / 398 kgP

NTM April 2025

PRODUCTION & EFFICIENCY NO. OF DTRS 26338 REL 99%

		90	100	110	120
Production	91	[Bar chart showing 91 on a scale of 90-120]			
Milk kg	97	[Bar chart showing 97 on a scale of 90-120]			
Protein kg	94	[Bar chart showing 94 on a scale of 90-120]			
Protein %	96	[Bar chart showing 96 on a scale of 90-120]			
Fat, kg	89	[Bar chart showing 89 on a scale of 90-120]			
Fat, %	92	[Bar chart showing 92 on a scale of 90-120]			
Growth	109	[Bar chart showing 109 on a scale of 90-120]			
Saved feed		[Bar chart showing 0 on a scale of 90-120]			
Persistency	99	[Bar chart showing 99 on a scale of 90-120]			

FUNCTIONAL NO. OF DTRS 25979 REL 99%

		90	100	110	120
Daughter fertility	89	[Bar chart showing 89 on a scale of 90-120]			
Calving sire	105	[Bar chart showing 105 on a scale of 90-120]			
Calving maternal	99	[Bar chart showing 99 on a scale of 90-120]			
Udder health	105	[Bar chart showing 105 on a scale of 90-120]			
General health	108	[Bar chart showing 108 on a scale of 90-120]			
Longevity	95	[Bar chart showing 95 on a scale of 90-120]			
Hoof health	96	[Bar chart showing 96 on a scale of 90-120]			
Youngstock survival	97	[Bar chart showing 97 on a scale of 90-120]			
Milkability	86	[Bar chart showing 86 on a scale of 90-120]			
Temperament	93	[Bar chart showing 93 on a scale of 90-120]			

OVERALL CONFORMATION NO. OF DTRS 11892 REL 99%

		90	100	110	120
Frame	100	[Bar chart showing 100 on a scale of 90-120]			
Feet & legs	94	[Bar chart showing 94 on a scale of 90-120]			
Udder	90	[Bar chart showing 90 on a scale of 90-120]			

CONFORMATION

		80	90	100	110	120		
Stature	Short	[Bar chart showing Short on a scale of 80-120]					Tall	96
Rib structure	Coarse	[Bar chart showing Coarse on a scale of 80-120]					Angular	87
Chest width	Narrow	[Bar chart showing Narrow on a scale of 80-120]					Wide	119
Body depth	Shallow	[Bar chart showing Shallow on a scale of 80-120]					Deep	107
Rump width	Narrow pins	[Bar chart showing Narrow pins on a scale of 80-120]					Wide pins	87
Rump angle	High pins	[Bar chart showing High pins on a scale of 80-120]					Low pins	94
Top line	Weak	[Bar chart showing Weak on a scale of 80-120]					Strong	106
Rear legs, side view	Straight	[Bar chart showing Straight on a scale of 80-120]					Sickled	97
Rear legs, rear view	Toes out	[Bar chart showing Toes out on a scale of 80-120]					Parallel	102
Foot angle	Low	[Bar chart showing Low on a scale of 80-120]					Steep	106
Bone quality	Coarse	[Bar chart showing Coarse on a scale of 80-120]					Fine and thin	87
Hock quality	Filled	[Bar chart showing Filled on a scale of 80-120]					Dry	90
Fore udder attachme...	Loose	[Bar chart showing Loose on a scale of 80-120]					Strong	82
Rear udder height	Low	[Bar chart showing Low on a scale of 80-120]					High	84
Rear udder width	Narrow	[Bar chart showing Narrow on a scale of 80-120]					Wide	93
Udder support	Weak	[Bar chart showing Weak on a scale of 80-120]					Strong	114
Udder depth	Deep	[Bar chart showing Deep on a scale of 80-120]					High	81
Udder balance	Deep rear	[Bar chart showing Deep rear on a scale of 80-120]					Deep front	97
Teat length	Short	[Bar chart showing Short on a scale of 80-120]					Long	113
Teat thickness	Thin	[Bar chart showing Thin on a scale of 80-120]					Thick	120
Teat placement (front)	Wide	[Bar chart showing Wide on a scale of 80-120]					Close	92
Teat placement (back)	Wide	[Bar chart showing Wide on a scale of 80-120]					Close	95