

# VJ Hickey

DNK 303137

Kappa casein: BB

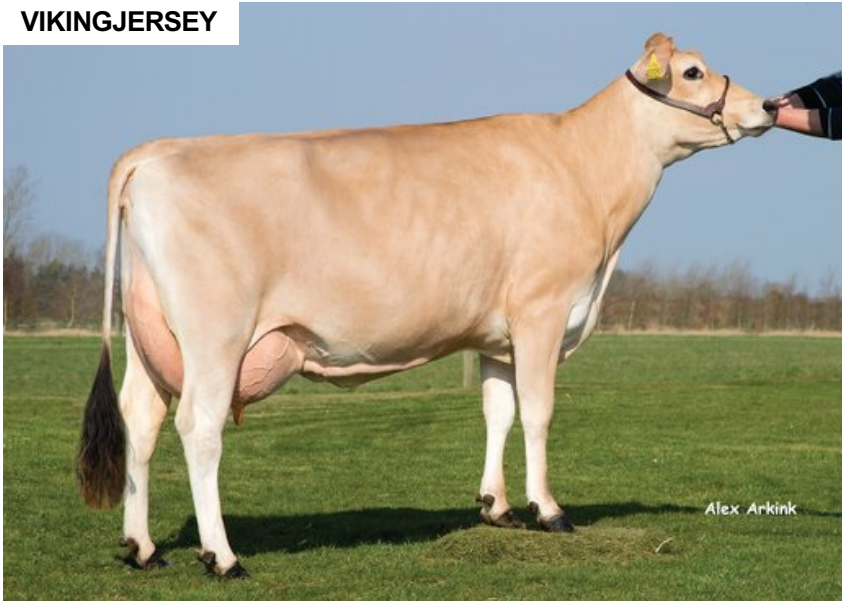
DOB.: 12/09/2007

Q Hirse x FYN Lemvig x JAS Dixi

Proven



## VIKINGJERSEY



## NTM 10

### RECOMMENDED FOR

- FERTILITY

Daughter of VJ Hickey

**Dam average (305 days)** 7511 kg 6.07 % F / 456 kgF 4.19 % P / 315 kgP  
**Est. dtr. average (305 days)** 7768 kg 5.98 % F / 463 kgF 4.34 % P / 336 kgP

### NTM June 2024

#### PRODUCTION & EFFICIENCY NO. OF DTRS 277 REL 97%

	90	100	110	120
Production	108			
Milk kg	104			
Protein kg	108			
Protein %	103			
Fat, kg	107			
Fat, %	100			
Growth	120			
Saved feed	94			
Persistency	102			

#### FUNCTIONAL NO. OF DTRS 244 REL 94%

	90	100	110	120
Daughter fertility	112			
Calving sire	102			
Calving maternal	107			
Udder health	99			
General health	107			
Longevity	107			
Hoof health	92			
Youngstock survival	117			
Milkability	102			
Temperament	101			

#### OVERALL CONFORMATION NO. OF DTRS 209 REL 97%

	90	100	110	120
Frame	88			
Feet & legs	100			
Udder	89			

#### CONFORMATION

	80	90	100	110	120
Stature	Short				Tall 92
Rib structure	Coarse				Angular 90
Chest width	Narrow				Wide 109
Body depth	Shallow				Deep 113
Rump width	Narrow pins				Wide pins 104
Rump angle	High pins				Low pins 104
Top line	Weak				Strong 80
Rear legs, side view	Straight				Sickled 97
Rear legs, rear view	Toes out				Parallel 105
Foot angle	Low				Steep 102
Bone quality	Coarse				Fine and thin 91
Hock quality	Filled				Dry 95
Fore udder attachme...	Loose				Strong 90
Rear udder height	Low				High 94
Rear udder width	Narrow				Wide 101
Udder support	Weak				Strong 97
Udder depth	Deep				High 78
Udder balance	Deep rear				Deep front 96
Teat length	Short				Long 111
Teat thickness	Thin				Thick 122
Teat placement (front)	Wide				Close 84
Teat placement (back)	Wide				Close 90