

# VJ Tei

DNK 303211

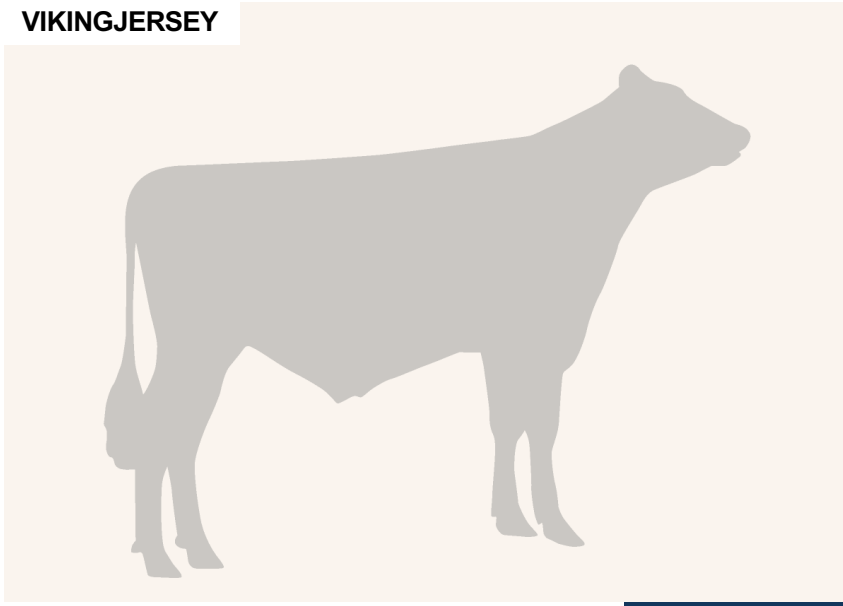
aAa: 642153

DOB.: 29/02/2008 DJ Topholm x Q Hirse x FYN Lemvig

Proven



## VIKINGJERSEY



## NTM -6

RECOMMENDED FOR

- SOLIDS
- FERTILITY

Dam average (305 days) 6839 kg 6.64 % F / 454 kgF 4.38 % P / 299 kgP  
 Est. dtr. average (305 days) 7167 kg 6.31 % F / 445 kgF 4.38 % P / 313 kgP

### NTM October 2024

#### PRODUCTION & EFFICIENCY NO. OF DTRS 356 REL 98%

		90	100	110	120
Production	86	[Bar chart showing production value 86]			
Milk kg	83	[Bar chart showing milk kg value 83]			
Protein kg	81	[Bar chart showing protein kg value 81]			
Protein %	107	[Bar chart showing protein % value 107]			
Fat, kg	90	[Bar chart showing fat kg value 90]			
Fat, %	113	[Bar chart showing fat % value 113]			
Growth	116	[Bar chart showing growth value 116]			
Saved feed	102	[Bar chart showing saved feed value 102]			
Persistency	96	[Bar chart showing persistency value 96]			

#### FUNCTIONAL NO. OF DTRS 323 REL 95%

		90	100	110	120
Daughter fertility	105	[Bar chart showing daughter fertility value 105]			
Calving sire	93	[Bar chart showing calving sire value 93]			
Calving maternal	93	[Bar chart showing calving maternal value 93]			
Udder health	113	[Bar chart showing udder health value 113]			
General health	99	[Bar chart showing general health value 99]			
Longevity	103	[Bar chart showing longevity value 103]			
Hoof health	93	[Bar chart showing hoof health value 93]			
Youngstock survival	97	[Bar chart showing youngstock survival value 97]			
Milkability	99	[Bar chart showing milkability value 99]			
Temperament	98	[Bar chart showing temperament value 98]			

#### OVERALL CONFORMATION NO. OF DTRS 243 REL 95%

		90	100	110	120
Frame	85	[Bar chart showing frame value 85]			
Feet & legs	114	[Bar chart showing feet & legs value 114]			
Udder	93	[Bar chart showing udder value 93]			

#### CONFORMATION

		80	90	100	110	120	
Stature	Short	[Bar chart showing stature value 86]				Tall	86
Rib structure	Coarse	[Bar chart showing rib structure value 72]				Angular	72
Chest width	Narrow	[Bar chart showing chest width value 112]				Wide	112
Body depth	Shallow	[Bar chart showing body depth value 98]				Deep	98
Rump width	Narrow pins	[Bar chart showing rump width value 95]				Wide pins	95
Rump angle	High pins	[Bar chart showing rump angle value 100]				Low pins	100
Top line	Weak	[Bar chart showing top line value 92]				Strong	92
Rear legs, side view	Straight	[Bar chart showing rear legs side view value 76]				Sickled	76
Rear legs, rear view	Toes out	[Bar chart showing rear legs rear view value 100]				Parallel	100
Foot angle	Low	[Bar chart showing foot angle value 122]				Steep	122
Bone quality	Coarse	[Bar chart showing bone quality value 91]				Fine and thin	91
Hock quality	Filled	[Bar chart showing hock quality value 90]				Dry	90
Fore udder attachme...	Loose	[Bar chart showing fore udder attachme... value 91]				Strong	91
Rear udder height	Low	[Bar chart showing rear udder height value 90]				High	90
Rear udder width	Narrow	[Bar chart showing rear udder width value 91]				Wide	91
Udder support	Weak	[Bar chart showing udder support value 105]				Strong	105
Udder depth	Deep	[Bar chart showing udder depth value 95]				High	95
Udder balance	Deep rear	[Bar chart showing udder balance value 101]				Deep front	101
Teat length	Short	[Bar chart showing teat length value 96]				Long	96
Teat thickness	Thin	[Bar chart showing teat thickness value 99]				Thick	99
Teat placement (front)	Wide	[Bar chart showing teat placement (front) value 88]				Close	88
Teat placement (back)	Wide	[Bar chart showing teat placement (back) value 97]				Close	97