

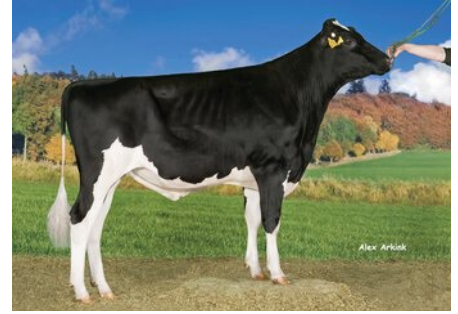
VH Bernell

DNK 257379

Beta casein: A2A2 Kappa casein: BB aAa: 432
 DOB.: 18/03/2014 Bube x VH Salomon x Mascol
 Proven



VIKINGHOLSTEIN



NTM 19

RECOMMENDED FOR

- MILK • CALVING EASE • HOOF HEALTH
- ORGANIC • PROCROSS LIQUID
- PROCROSS SOLIDS

Daughter of VH Bernell

Dam average (305 days) 11637 kg 4.43 % F / 516 kgF 3.66 % P / 426 kgP
Est. dtr. average (305 days) 11929 kg 4.01 % F / 474 kgF 3.49 % P / 414 kgP

NTM July 2024

PRODUCTION & EFFICIENCY		NO. OF DTRS 5863		REL 99%	
		90	100	110	120
Production	110				
Milk kg	115				
Protein kg	115				
Protein %	98				
Fat, kg	106				
Fat, %	93				
Growth	105				
Saved feed	113				
Persistency	111				

FUNCTIONAL		NO. OF DTRS 5737		REL 99%	
		90	100	110	120
Daughter fertility	103				
Calving sire	105				
Calving maternal	106				
Udder health	104				
General health	103				
Longevity	114				
Hoof health	114				
Youngstock survival	114				
Milkability	89				
Temperament	102				

OVERALL CONFORMATION		NO. OF DTRS 2445		REL 98%	
		90	100	110	120
Frame	100				
Feet & legs	107				
Udder	104				

CONFORMATION		80		90		100		110		120	
Stature	Short									Tall	99
Rib structure	Coarse									Angular	106
Chest width	Narrow									Wide	93
Body depth	Shallow									Deep	91
Rump width	Narrow pins									Wide pins	114
Rump angle	High pins									Low pins	108
Top line	Weak									Strong	98
Rear legs, side view	Straight									Sickled	114
Rear legs, rear view	Toes out									Parallel	113
Foot angle	Low									Steep	80
Bone quality	Coarse									Fine and thin	111
Hock quality	Filled									Dry	114
Fore udder attachme...	Loose									Strong	104
Rear udder height	Low									High	108
Rear udder width	Narrow									Wide	98
Udder support	Weak									Strong	95
Udder depth	Deep									High	107
Udder balance	Deep rear									Deep front	96
Teat length	Short									Long	86
Teat thickness	Thin									Thick	93
Teat placement (front)	Wide									Close	107
Teat placement (back)	Wide									Close	108