

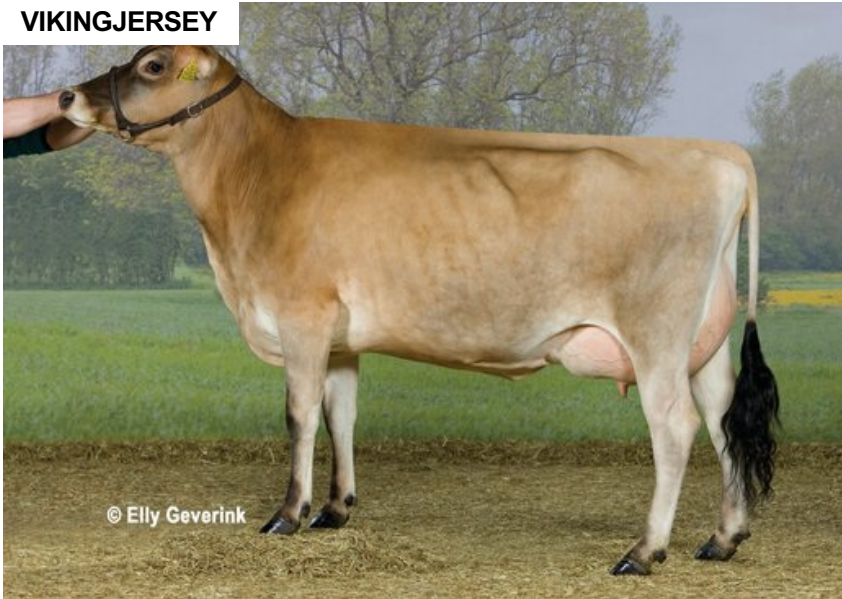
VJ Hilario

DNK 303406

Beta casein: A2A2 Kappa casein: AB aAa: 156324
 DOB.: 09/10/2009 Q Hirse x Q Impuls x FYN Lemvig
 Proven Polled: POF



VIKINGJERSEY



NTM -14

RECOMMENDED FOR

- FERTILITY

Daughter of VJ Hilario

Dam average (305 days) 9274 kg 5.24 % F / 486 kgF 4.09 % P / 380 kgP
Est. dtr. average (305 days) 7892 kg 5.69 % F / 450 kgF 4.26 % P / 336 kgP

NTM April 2026

PRODUCTION & EFFICIENCY NO. OF DTRS 3652 REL 99%

		90	100	110	120
Production	88	[Bar chart showing 88 vs 90-120]			
Milk kg	104	[Bar chart showing 104 vs 90-120]			
Protein kg	96	[Bar chart showing 96 vs 90-120]			
Protein %	88	[Bar chart showing 88 vs 90-120]			
Fat, kg	87	[Bar chart showing 87 vs 90-120]			
Fat, %	88	[Bar chart showing 88 vs 90-120]			
Growth	105	[Bar chart showing 105 vs 90-120]			
Saved feed	94	[Bar chart showing 94 vs 90-120]			
Persistency	89	[Bar chart showing 89 vs 90-120]			

FUNCTIONAL NO. OF DTRS 2372 REL 99%

		90	100	110	120
Daughter fertility	111	[Bar chart showing 111 vs 90-120]			
Calving sire	98	[Bar chart showing 98 vs 90-120]			
Calving maternal	101	[Bar chart showing 101 vs 90-120]			
Udder health	98	[Bar chart showing 98 vs 90-120]			
General health	92	[Bar chart showing 92 vs 90-120]			
Longevity	99	[Bar chart showing 99 vs 90-120]			
Hoof health	72	[Bar chart showing 72 vs 90-120]			
Youngstock survival	99	[Bar chart showing 99 vs 90-120]			
Milkability	87	[Bar chart showing 87 vs 90-120]			
Temperament	95	[Bar chart showing 95 vs 90-120]			

OVERALL CONFORMATION NO. OF DTRS 2077 REL 97%

		90	100	110	120
Frame	121	[Bar chart showing 121 vs 90-120]			
Feet & legs	97	[Bar chart showing 97 vs 90-120]			
Udder	100	[Bar chart showing 100 vs 90-120]			

CONFORMATION

		80	90	100	110	120	
Stature	Short	[Bar chart showing Short vs 80-120]				Tall	105
Rib structure	Coarse	[Bar chart showing Coarse vs 80-120]				Angular	108
Chest width	Narrow	[Bar chart showing Narrow vs 80-120]				Wide	102
Body depth	Shallow	[Bar chart showing Shallow vs 80-120]				Deep	110
Rump width	Narrow pins	[Bar chart showing Narrow pins vs 80-120]				Wide pins	110
Rump angle	High pins	[Bar chart showing High pins vs 80-120]				Low pins	101
Top line	Weak	[Bar chart showing Weak vs 80-120]				Strong	123
Rear legs, side view	Straight	[Bar chart showing Straight vs 80-120]				Sickled	97
Rear legs, rear view	Toes out	[Bar chart showing Toes out vs 80-120]				Parallel	102
Foot angle	Low	[Bar chart showing Low vs 80-120]				Steep	100
Bone quality	Coarse	[Bar chart showing Coarse vs 80-120]				Fine and thin	96
Hock quality	Filled	[Bar chart showing Filled vs 80-120]				Dry	90
Fore udder attachme...	Loose	[Bar chart showing Loose vs 80-120]				Strong	97
Rear udder height	Low	[Bar chart showing Low vs 80-120]				High	111
Rear udder width	Narrow	[Bar chart showing Narrow vs 80-120]				Wide	118
Udder support	Weak	[Bar chart showing Weak vs 80-120]				Strong	107
Udder depth	Deep	[Bar chart showing Deep vs 80-120]				High	91
Udder balance	Deep rear	[Bar chart showing Deep rear vs 80-120]				Deep front	99
Teat length	Short	[Bar chart showing Short vs 80-120]				Long	99
Teat thickness	Thin	[Bar chart showing Thin vs 80-120]				Thick	108
Teat placement (front)	Wide	[Bar chart showing Wide vs 80-120]				Close	95
Teat placement (back)	Wide	[Bar chart showing Wide vs 80-120]				Close	100