

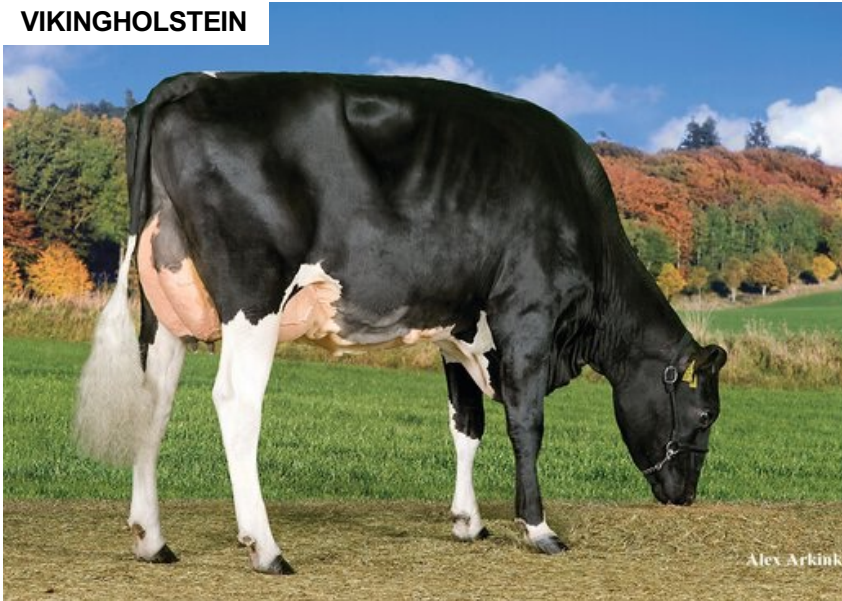
VH Grafit

DNK 253217

Beta casein: A1A2 Kappa casein: AB aAa: 234
 DOB.: 26/03/2009 B Goldwyn x Oman Justi x MARA-THON BW MARSHALL-ET
 Proven



VIKINGHOLSTEIN



NTM -16

Daughter of VH Grafit

Dam average (305 days) 12083 kg 4.17 % F / 504 kgF 3.42 % P / 413 kgP
Est. dtr. average (305 days) 11824 kg 4.19 % F / 490 kgF 3.53 % P / 416 kgP

NTM May 2026

PRODUCTION & EFFICIENCY NO. OF DTRS 12837 REL 99%

		90	100	110	120
Production	101				
Milk kg	102				
Protein kg	100				
Protein %	97				
Fat, kg	103				
Fat, %	100				
Growth	99				
Saved feed					
Persistency	104				

FUNCTIONAL NO. OF DTRS 12868 REL 99%

		90	100	110	120
Daughter fertility	93				
Calving sire	102				
Calving maternal	94				
Udder health	95				
General health	88				
Longevity	85				
Hoof health	100				
Youngstock survival	91				
Milkability	95				
Temperament	74				

OVERALL CONFORMATION NO. OF DTRS 6188 REL 99%

		90	100	110	120
Frame	109				
Feet & legs	104				
Udder	60				

CONFORMATION

		80	90	100	110	120
Stature	Short					Tall 114
Rib structure	Coarse					Angular 106
Chest width	Narrow					Wide 100
Body depth	Shallow					Deep 112
Rump width	Narrow pins					Wide pins 94
Rump angle	High pins					Low pins 105
Top line	Weak					Strong 102
Rear legs, side view	Straight					Sickled 111
Rear legs, rear view	Toes out					Parallel 102
Foot angle	Low					Steep 100
Bone quality	Coarse					Fine and thin 95
Hock quality	Filled					Dry 109
Fore udder attachme...	Loose					Strong 80
Rear udder height	Low					High 92
Rear udder width	Narrow					Wide 90
Udder support	Weak					Strong 71
Udder depth	Deep					High 77
Udder balance	Deep rear					Deep front 78
Teat length	Short					Long 102
Teat thickness	Thin					Thick 106
Teat placement (front)	Wide					Close 79
Teat placement (back)	Wide					Close 70