

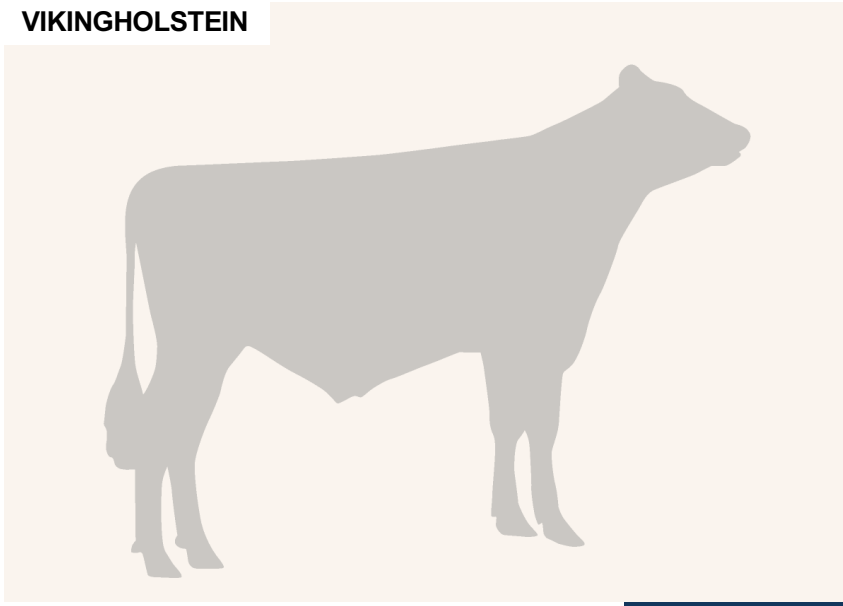
VH Ramis

CAN 109051033

Beta casein: A2A2 Kappa casein: AB aAa: 234165
 DOB.: 05/10/2014 Racer x Mogul x Freddie
 Proven Polled: POF



VIKINGHOLSTEIN



NTM 6

RECOMMENDED FOR

- MILK
- PROCROSS LIQUID
- PROCROSS SOLIDS

Dam average (305 days) Data not available
 Est. dtr. average (305 days) 11995 kg 4.03 % F / 479 kgF 3.47 % P / 415 kgP

NTM June 2024

PRODUCTION & EFFICIENCY NO. OF DTRS 700 REL 98%

		90	100	110	120
Production	112				
Milk kg	117				
Protein kg	116				
Protein %	96				
Fat, kg	110				
Fat, %	94				
Growth	96				
Saved feed	92				
Persistency	104				

FUNCTIONAL NO. OF DTRS 677 REL 98%

		90	100	110	120
Daughter fertility	83				
Calving sire	103				
Calving maternal	100				
Udder health	97				
General health	100				
Longevity	100				
Hoof health	94				
Youngstock survival	103				
Milkability	118				
Temperament	107				

OVERALL CONFORMATION NO. OF DTRS 326 REL 93%

		90	100	110	120
Frame	102				
Feet & legs	103				
Udder	106				

CONFORMATION

		80	90	100	110	120
Stature	Short					Tall 102
Rib structure	Coarse					Angular 102
Chest width	Narrow					Wide 101
Body depth	Shallow					Deep 102
Rump width	Narrow pins					Wide pins 98
Rump angle	High pins					Low pins 94
Top line	Weak					Strong 95
Rear legs, side view	Straight					Sickled 83
Rear legs, rear view	Toes out					Parallel 102
Foot angle	Low					Steep 103
Bone quality	Coarse					Fine and thin 100
Hock quality	Filled					Dry 105
Fore udder attachme...	Loose					Strong 109
Rear udder height	Low					High 107
Rear udder width	Narrow					Wide 105
Udder support	Weak					Strong 120
Udder depth	Deep					High 105
Udder balance	Deep rear					Deep front 104
Teat length	Short					Long 87
Teat thickness	Thin					Thick 95
Teat placement (front)	Wide					+ Close 132
Teat placement (back)	Wide					+ Close 130