

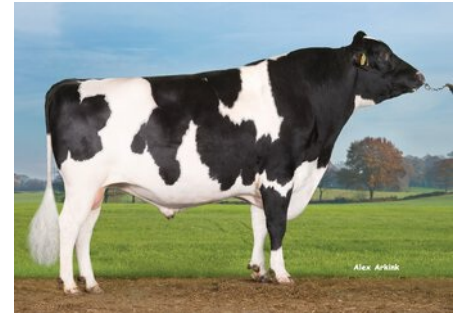
VH Broback

DNK 258109

Beta casein: A2A2 Kappa casein: BB aAa: 435
 DOB.: 01/02/2015 Balisto x VH Mandel x VH Gotfred
 Proven Polled: POF



VIKINGHOLSTEIN



NTM 16

RECOMMENDED FOR

- GRAZING • ROBOT • SOLIDS
- CALVING EASE • HOOF HEALTH
- ORGANIC • PROCROSS LIQUID
- PROCROSS SOLIDS

Daughter of VH Broback

Dam average (305 days) 8670 kg 5.17 % F / 448 kgF 3.78 % P / 328 kgP
 Est. dtr. average (305 days) 11175 kg 4.38 % F / 480 kgF 3.59 % P / 398 kgP

NTM June 2024

PRODUCTION & EFFICIENCY NO. OF DTRS 6419 REL 99%

	90	100	110	120
Production	107			
Milk kg	92			
Protein kg	99			
Protein %	112			
Fat, kg	111			
Fat, %	116			
Growth	92			
Saved feed	110			
Persistency	93			

FUNCTIONAL NO. OF DTRS 6550 REL 99%

	90	100	110	120
Daughter fertility	100			
Calving sire	115			
Calving maternal	106			
Udder health	104			
General health	106			
Longevity	109			
Hoof health	110			
Youngstock survival	111			
Milkability	100			
Temperament	101			

OVERALL CONFORMATION NO. OF DTRS 3004 REL 99%

	90	100	110	120
Frame	94			
Feet & legs	111			
Udder	106			

CONFORMATION

	80	90	100	110	120
Stature	Short				Tall 97
Rib structure	Coarse				Angular 100
Chest width	Narrow				Wide 88
Body depth	Shallow				Deep 96
Rump width	Narrow pins				Wide pins 102
Rump angle	High pins				Low pins 85
Top line	Weak				Strong 90
Rear legs, side view	Straight				Sickled 96
Rear legs, rear view	Toes out				Parallel 110
Foot angle	Low				Steep 102
Bone quality	Coarse				Fine and thin 109
Hock quality	Filled				Dry 105
Fore udder attachme...	Loose				Strong 108
Rear udder height	Low				High 111
Rear udder width	Narrow				Wide 117
Udder support	Weak				Strong 101
Udder depth	Deep				High 101
Udder balance	Deep rear				Deep front 101
Teat length	Short				Long 103
Teat thickness	Thin				Thick 97
Teat placement (front)	Wide				Close 114
Teat placement (back)	Wide				Close 103