

VJ Dau

DNK 304251

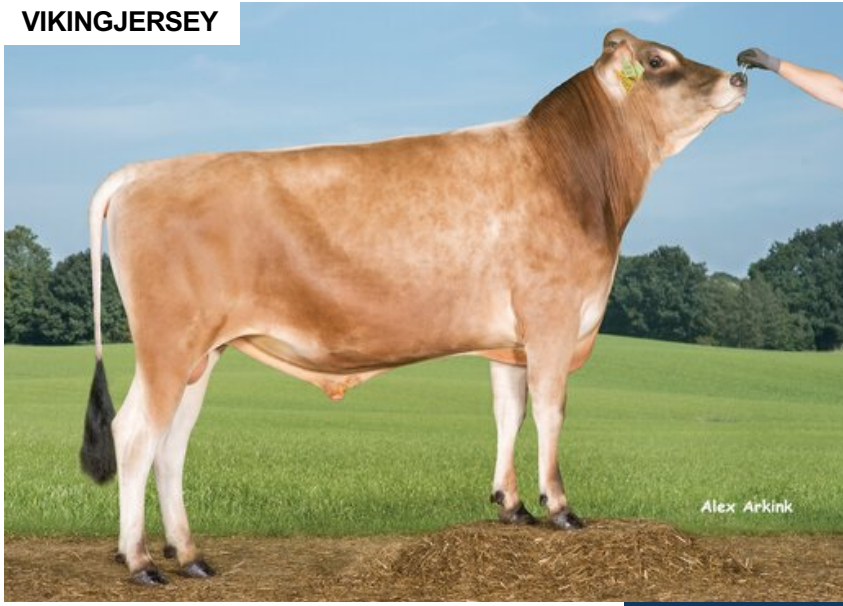
Beta casein: A2A2 Kappa casein: BB aAa: 432

DOB.: 28/07/2015 VJ Hjort x VJ Tei x DJ Zuma

Proven Polled: POF



VIKINGJERSEY



NTM 2

RECOMMENDED FOR

- GRAZING • SOLIDS • FERTILITY
- HOOF HEALTH

Dam average (305 days) 7281 kg 6.31 % F / 459 kgF 4.23 % P / 308 kgP
 Est. dtr. average (305 days) 7224 kg 6.26 % F / 445 kgF 4.41 % P / 316 kgP

NTM July 2024

PRODUCTION & EFFICIENCY NO. OF DTRS 1534 REL 99%

		90	100	110	120
Production	89	[Bar chart showing 89 on a scale of 90-120]			
Milk kg	85	[Bar chart showing 85 on a scale of 90-120]			
Protein kg	85	[Bar chart showing 85 on a scale of 90-120]			
Protein %	110	[Bar chart showing 110 on a scale of 90-120]			
Fat, kg	90	[Bar chart showing 90 on a scale of 90-120]			
Fat, %	111	[Bar chart showing 111 on a scale of 90-120]			
Growth	106	[Bar chart showing 106 on a scale of 90-120]			
Saved feed	98	[Bar chart showing 98 on a scale of 90-120]			
Persistency	95	[Bar chart showing 95 on a scale of 90-120]			

FUNCTIONAL NO. OF DTRS 1178 REL 98%

		90	100	110	120
Daughter fertility	115	[Bar chart showing 115 on a scale of 90-120]			
Calving sire	97	[Bar chart showing 97 on a scale of 90-120]			
Calving maternal	116	[Bar chart showing 116 on a scale of 90-120]			
Udder health	112	[Bar chart showing 112 on a scale of 90-120]			
General health	104	[Bar chart showing 104 on a scale of 90-120]			
Longevity	99	[Bar chart showing 99 on a scale of 90-120]			
Hoof health	114	[Bar chart showing 114 on a scale of 90-120]			
Youngstock survival	96	[Bar chart showing 96 on a scale of 90-120]			
Milkability	109	[Bar chart showing 109 on a scale of 90-120]			
Temperament	108	[Bar chart showing 108 on a scale of 90-120]			

OVERALL CONFORMATION NO. OF DTRS 809 REL 94%

		90	100	110	120
Frame	94	[Bar chart showing 94 on a scale of 90-120]			
Feet & legs	99	[Bar chart showing 99 on a scale of 90-120]			
Udder	93	[Bar chart showing 93 on a scale of 90-120]			

CONFORMATION

		80	90	100	110	120	
Stature	Short	[Bar chart showing Short on a scale of 80-120]				Tall	101
Rib structure	Coarse	[Bar chart showing Coarse on a scale of 80-120]				Angular	85
Chest width	Narrow	[Bar chart showing Narrow on a scale of 80-120]				Wide	118
Body depth	Shallow	[Bar chart showing Shallow on a scale of 80-120]				Deep	112
Rump width	Narrow pins	[Bar chart showing Narrow pins on a scale of 80-120]				Wide pins	104
Rump angle	High pins	[Bar chart showing High pins on a scale of 80-120]				Low pins	128
Top line	Weak	[Bar chart showing Weak on a scale of 80-120]				Strong	110
Rear legs, side view	Straight	[Bar chart showing Straight on a scale of 80-120]				Sickled	91
Rear legs, rear view	Toes out	[Bar chart showing Toes out on a scale of 80-120]				Parallel	92
Foot angle	Low	[Bar chart showing Low on a scale of 80-120]				Steep	103
Bone quality	Coarse	[Bar chart showing Coarse on a scale of 80-120]				Fine and thin	94
Hock quality	Filled	[Bar chart showing Filled on a scale of 80-120]				Dry	96
Fore udder attachme...	Loose	[Bar chart showing Loose on a scale of 80-120]				Strong	97
Rear udder height	Low	[Bar chart showing Low on a scale of 80-120]				High	88
Rear udder width	Narrow	[Bar chart showing Narrow on a scale of 80-120]				Wide	86
Udder support	Weak	[Bar chart showing Weak on a scale of 80-120]				Strong	90
Udder depth	Deep	[Bar chart showing Deep on a scale of 80-120]				High	102
Udder balance	Deep rear	[Bar chart showing Deep rear on a scale of 80-120]				Deep front	86
Teat length	Short	[Bar chart showing Short on a scale of 80-120]				Long	100
Teat thickness	Thin	[Bar chart showing Thin on a scale of 80-120]				Thick	93
Teat placement (front)	Wide	[Bar chart showing Wide on a scale of 80-120]				Close	103
Teat placement (back)	Wide	[Bar chart showing Wide on a scale of 80-120]				Close	101