

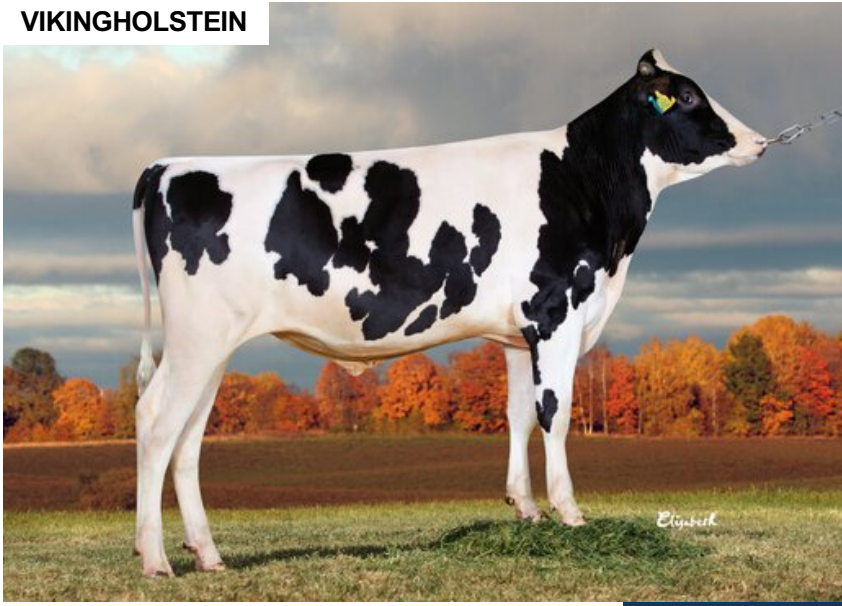
VH Nexus

SWE 45103

Beta casein: A1A2 Kappa casein: BB aAa: 243156
 DOB.: 07/10/2015 Nilson x VH Op x VH Randy
 Proven Polled: POF



VIKINGHOLSTEIN



NTM 6

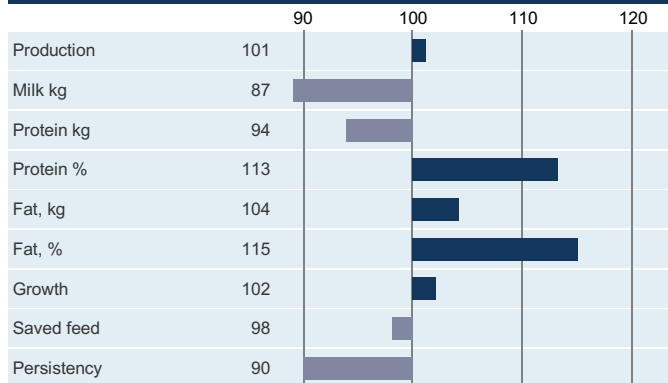
RECOMMENDED FOR

- SOLIDS • FERTILITY • HOOF HEALTH

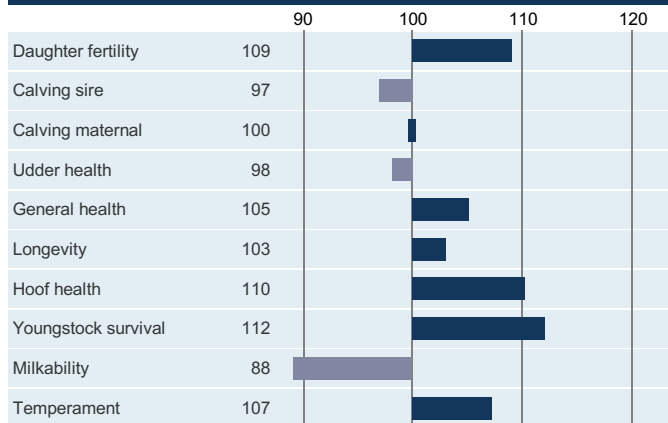
Dam average (305 days) 11346 kg 4.15 % F / 471 kgF 3.45 % P / 392 kgP
 Est. dtr. average (305 days) 11276 kg 4.41 % F / 488 kgF 3.64 % P / 407 kgP

NTM March 2026

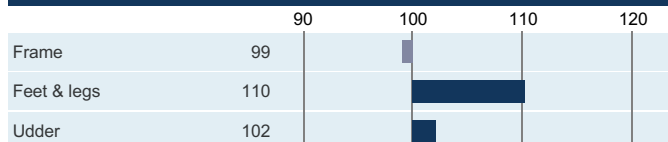
PRODUCTION & EFFICIENCY NO. OF DTRS 1750 REL 99%



FUNCTIONAL NO. OF DTRS 1770 REL 99%



OVERALL CONFORMATION NO. OF DTRS 775 REL 96%



CONFORMATION

