

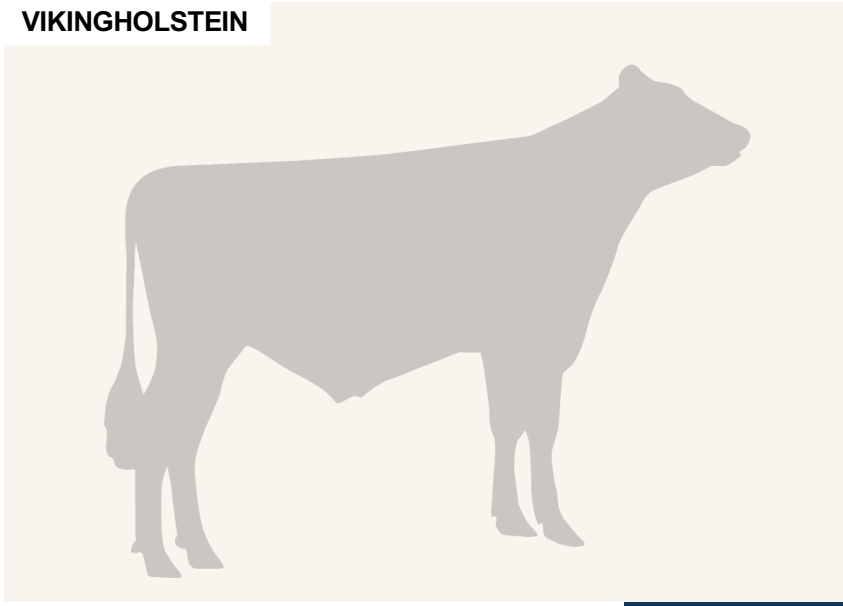
VH Bradoc

DNK 258649

Beta casein: A2A2 Kappa casein: AB aAa: 234
 DOB.: 26/10/2015 VH Blush x VH Bynke x D Rødding
 Proven Polled: POF



VIKINGHOLSTEIN



NTM 10

RECOMMENDED FOR

- GRAZING • SOLIDS • FERTILITY
- CALVING EASE • HOOF HEALTH
- ORGANIC • PROCROSS LIQUID
- PROCROSS SOLIDS

Dam average (305 days) 11213 kg 4.28 % F / 480 kgF 3.52 % P / 395 kgP
 Est. dtr. average (305 days) 10715 kg 4.3 % F / 453 kgF 3.65 % P / 387 kgP

NTM July 2024

PRODUCTION & EFFICIENCY NO. OF DTRS 7695 REL 99%

		90	100	110	120
Production	91				
Milk kg	78				
Protein kg	88				
Protein %	121				+
Fat, kg	89				
Fat, %	111				
Growth	101				
Saved feed	104				
Persistency	92				

FUNCTIONAL NO. OF DTRS 7513 REL 99%

		90	100	110	120
Daughter fertility	113				
Calving sire	105				
Calving maternal	108				
Udder health	114				
General health	125				+
Longevity	107				
Hoof health	118				
Youngstock survival	109				
Milkability	102				
Temperament	95				

OVERALL CONFORMATION NO. OF DTRS 2897 REL 98%

		90	100	110	120
Frame	91				
Feet & legs	103				
Udder	102				

CONFORMATION

		80	90	100	110	120
Stature	Short					Tall 93
Rib structure	Coarse					Angular 82
Chest width	Narrow					Wide 109
Body depth	Shallow					Deep 93
Rump width	Narrow pins					Wide pins 92
Rump angle	High pins					Low pins 104
Top line	Weak					Strong 105
Rear legs, side view	Straight					Sickled 105
Rear legs, rear view	Toes out					Parallel 107
Foot angle	Low					Steep 92
Bone quality	Coarse					Fine and thin 103
Hock quality	Filled					Dry 104
Fore udder attachme...	Loose					Strong 103
Rear udder height	Low					High 92
Rear udder width	Narrow					Wide 92
Udder support	Weak					Strong 94
Udder depth	Deep					High 109
Udder balance	Deep rear					Deep front 115
Teat length	Short					Long 97
Teat thickness	Thin					Thick 82
Teat placement (front)	Wide					Close 95
Teat placement (back)	Wide					Close 88