

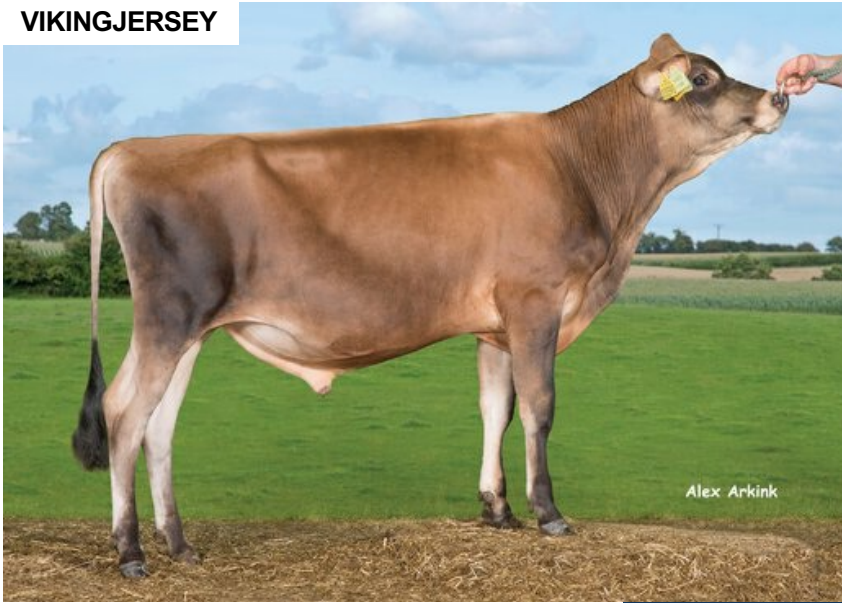
VJ Heavy

DNK 304496

Beta casein: A2A2 Kappa casein: BB aAa: 156
 DOB.: 29/10/2016 VJ Haley x VJ Lukowa x DJ Zuma
 Proven Polled: POF



VIKINGJERSEY



NTM 7

RECOMMENDED FOR

- MILK

Dam average (305 days) 7360 kg 5.8 % F / 427 kgF 4.11 % P / 302 kgP
 Est. dtr. average (305 days) 8057 kg 5.92 % F / 476 kgF 4.36 % P / 351 kgP

NTM June 2026

PRODUCTION & EFFICIENCY NO. OF DTRS 597 REL 99%

	90	100	110	120
Production	111			
Milk kg	108			
Protein kg	111			
Protein %	98			
Fat, kg	109			
Fat, %	97			
Growth	82			
Saved feed	101			
Persistency	92			

FUNCTIONAL NO. OF DTRS 480 REL 96%

	90	100	110	120
Daughter fertility	91			
Calving sire	111			
Calving maternal	95			
Udder health	103			
General health	96			
Longevity	109			
Hoof health	84			
Youngstock survival	109			
Milkability	91			
Temperament	103			

OVERALL CONFORMATION NO. OF DTRS 323 REL 92%

	90	100	110	120
Frame	103			
Feet & legs	82			
Udder	103			

CONFORMATION

	80	90	100	110	120
Stature	Short				Tall 97
Rib structure	Coarse				Angular 118
Chest width	Narrow				Wide 78
Body depth	Shallow				Deep 99
Rump width	Narrow pins				Wide pins 102
Rump angle	High pins				Low pins 99
Top line	Weak				Strong 100
Rear legs, side view	Straight				Sickled 98
Rear legs, rear view	Toes out				Parallel 66
Foot angle	Low				Steep 83
Bone quality	Coarse				Fine and thin 108
Hock quality	Filled				Dry 100
Fore udder attachme...	Loose				Strong 106
Rear udder height	Low				High 110
Rear udder width	Narrow				Wide 107
Udder support	Weak				Strong 87
Udder depth	Deep				High 99
Udder balance	Deep rear				Deep front 104
Teat length	Short				Long 86
Teat thickness	Thin				Thick 105
Teat placement (front)	Wide				Close 97
Teat placement (back)	Wide				Close 97