

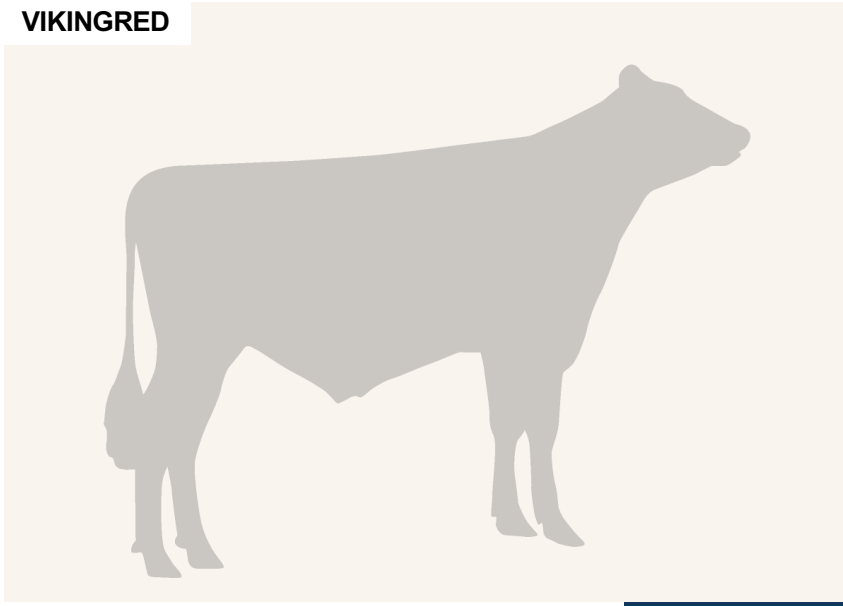
VR Funk

SWE 99859

Beta casein: A1A2 Kappa casein: AA
 DOB.: 01/11/2016 VR Fritz x VR Alibi x ST Hallebo
 Proven Polled: POF



VIKINGRED



NTM -16

RECOMMENDED FOR

• ROBOT

Dam average (305 days) 10393 kg 5.02 % F / 522 kgF 3.78 % P / 393 kgP
 Est. dtr. average (305 days) 9883 kg 4.49 % F / 441 kgF 3.55 % P / 351 kgP

NTM April 2026

PRODUCTION & EFFICIENCY NO. OF DTRS 428 REL 99%

		90	100	110	120
Production	100				
Milk kg	100				
Protein kg	96				
Protein %	92				
Fat, kg	105				
Fat, %	105				
Growth	108				
Saved feed	104				
Persistency	86				

FUNCTIONAL NO. OF DTRS 410 REL 95%

		90	100	110	120
Daughter fertility	68				
Calving sire	99				
Calving maternal	94				
Udder health	101				
General health	80				
Longevity	87				
Hoof health	57				
Youngstock survival	93				
Milkability	104				
Temperament	103				

OVERALL CONFORMATION NO. OF DTRS 238 REL 90%

		90	100	110	120
Frame	112				
Feet & legs	98				
Udder	106				

CONFORMATION

		80	90	100	110	120
Stature	Short					Tall 104
Rib structure	Coarse					Angular 104
Chest width	Narrow					Wide 124
Body depth	Shallow					Deep 122
Rump width	Narrow pins					Wide pins 111
Rump angle	High pins					Low pins 80
Top line	Weak					Strong 89
Rear legs, side view	Straight					Sickled 107
Rear legs, rear view	Toes out					Parallel 115
Foot angle	Low					Steep 98
Bone quality	Coarse					Fine and thin 96
Hock quality	Filled					Dry 93
Fore udder attachme...	Loose					Strong 109
Rear udder height	Low					High 94
Rear udder width	Narrow					Wide 101
Udder support	Weak					Strong 101
Udder depth	Deep					High 97
Udder balance	Deep rear					Deep front 108
Teat length	Short					Long 108
Teat thickness	Thin					Thick 104
Teat placement (front)	Wide					Close 92
Teat placement (back)	Wide					Close 84