

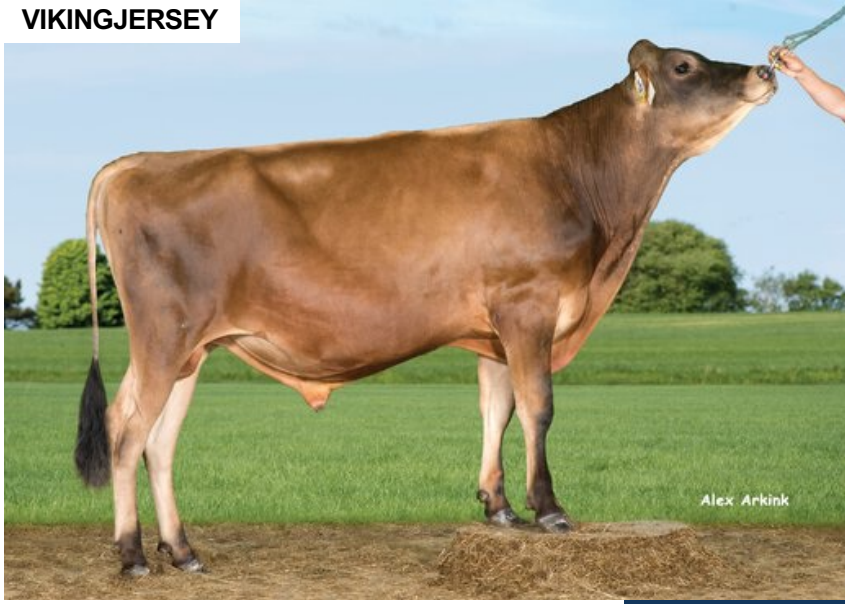
VJ Gutz

DNK 304577

Beta casein: A2A2 Kappa casein: BB aAa: 516342
 DOB.: 09/05/2017 VJ Gislev x VJ Lutz x DJ Hulk
 Proven Polled: POF



VIKINGJERSEY



NTM 3

RECOMMENDED FOR

• MILK

Dam average (305 days) 7969 kg 5.65 % F / 451 kgF 4.08 % P / 326 kgP
 Est. dtr. average (305 days) 8057 kg 6.05 % F / 483 kgF 4.34 % P / 349 kgP

NTM June 2026

PRODUCTION & EFFICIENCY NO. OF DTRS 3138 REL 99%

		90	100	110	120
Production	113				
Milk kg	108				
Protein kg	108				
Protein %	96				
Fat, kg	116				
Fat, %	102				
Growth	82				
Saved feed	116				
Persistency	107				

FUNCTIONAL NO. OF DTRS 2070 REL 99%

		90	100	110	120
Daughter fertility	86				
Calving sire	101				
Calving maternal	101				
Udder health	91				
General health	90				
Longevity	94				
Hoof health	70				
Youngstock survival	62				
Milkability	123				
Temperament	126				

OVERALL CONFORMATION NO. OF DTRS 1503 REL 96%

		90	100	110	120
Frame	105				
Feet & legs	111				
Udder	92				

CONFORMATION

		80	90	100	110	120
Stature	Short					Tall 101
Rib structure	Coarse					Angular 118
Chest width	Narrow					Wide 75
Body depth	Shallow					Deep 98
Rump width	Narrow pins					Wide pins 97
Rump angle	High pins					Low pins 101
Top line	Weak					Strong 114
Rear legs, side view	Straight					Sickled 92
Rear legs, rear view	Toes out					Parallel 112
Foot angle	Low					Steep 89
Bone quality	Coarse					Fine and thin 124
Hock quality	Filled					Dry 104
Fore udder attachme...	Loose					Strong 93
Rear udder height	Low					High 106
Rear udder width	Narrow					Wide 108
Udder support	Weak					Strong 111
Udder depth	Deep					High 101
Udder balance	Deep rear					Deep front 100
Teat length	Short					Long 84
Teat thickness	Thin					Thick 83
Teat placement (front)	Wide					Close 122
Teat placement (back)	Wide					Close 119