

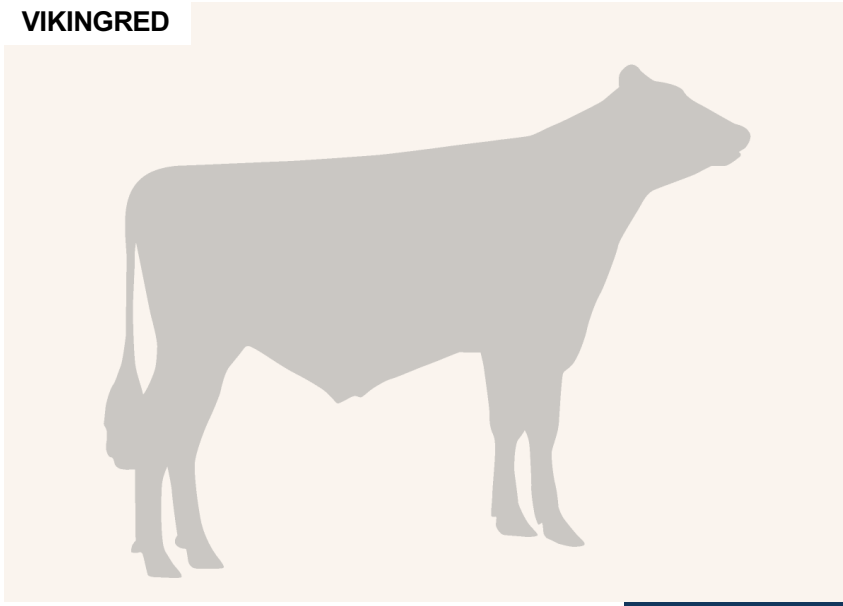
VR Frigg

DNK 38039

Beta casein: A2A2 Kappa casein: AB aAa: 243
 DOB.: 28/07/2017 VR Freeze x VR Vimpula x R Fanfare
 Proven Polled: POF



VIKINGRED



NTM 8

RECOMMENDED FOR

- GRAZING • FERTILITY • HOOF HEALTH
- ORGANIC

Dam average (305 days) 11434 kg 4.03 % F / 461 kgF 3.65 % P / 418 kgP
 Est. dtr. average (305 days) 9638 kg 4.58 % F / 438 kgF 3.63 % P / 350 kgP

NTM April 2025

PRODUCTION & EFFICIENCY NO. OF DTRS 158 REL 94%

		90	100	110	120
Production	99				
Milk kg	93				
Protein kg	95				
Protein %	104				
Fat, kg	103				
Fat, %	112				
Growth	96				
Saved feed	102				
Persistency	92				

FUNCTIONAL NO. OF DTRS 148 REL 88%

		90	100	110	120
Daughter fertility	107				
Calving sire	104				
Calving maternal	102				
Udder health	100				
General health	111				
Longevity	111				
Hoof health	107				
Youngstock survival	117				
Milkability	119				
Temperament	91				

OVERALL CONFORMATION NO. OF DTRS 96 REL 81%

		90	100	110	120
Frame	97				
Feet & legs	104				
Udder	94				

CONFORMATION

		80	90	100	110	120		
Stature	Short						Tall	99
Rib structure	Coarse						Angular	103
Chest width	Narrow						Wide	92
Body depth	Shallow						Deep	100
Rump width	Narrow pins						Wide pins	91
Rump angle	High pins						Low pins	99
Top line	Weak						Strong	108
Rear legs, side view	Straight						Sickled	118
Rear legs, rear view	Toes out						Parallel	90
Foot angle	Low						Steep	106
Bone quality	Coarse						Fine and thin	108
Hock quality	Filled						Dry	115
Fore udder attachme...	Loose						Strong	95
Rear udder height	Low						High	90
Rear udder width	Narrow						Wide	87
Udder support	Weak						Strong	100
Udder depth	Deep						High	106
Udder balance	Deep rear						Deep front	108
Teat length	Short						Long	91
Teat thickness	Thin						Thick	89
Teat placement (front)	Wide						Close	103
Teat placement (back)	Wide						Close	103