

# VJ Dandi

DNK 304614

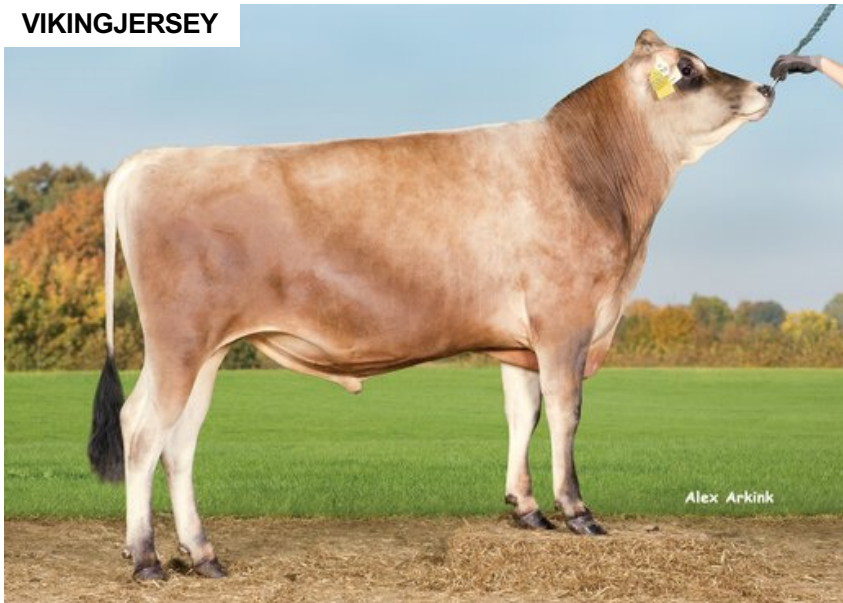
Beta casein: A2A2 Kappa casein: BB aAa: 426531

DOB.: 14/08/2017 VJ Dau x VJ Jotur x DJ Izzy

Proven Polled: POF



## VIKINGJERSEY



## NTM 8

### RECOMMENDED FOR

- CALVING EASE

Dam average (305 days) 6290 kg 6.31 % F / 397 kgF 4.27 % P / 269 kgP  
 Est. dtr. average (305 days) 7654 kg 6.16 % F / 466 kgF 4.35 % P / 332 kgP

### NTM October 2024

PRODUCTION & EFFICIENCY		NO. OF DTRS 2671		REL 99%	
		90	100	110	120
Production	108				
Milk kg	100				
Protein kg	103				
Protein %	104				
Fat, kg	110				
Fat, %	107				
Growth	110				
Saved feed	94				
Persistency	88				

FUNCTIONAL		NO. OF DTRS 2030		REL 98%	
		90	100	110	120
Daughter fertility	99				
Calving sire	106				
Calving maternal	111				
Udder health	103				
General health	98				
Longevity	97				
Hoof health	104				
Youngstock survival	98				
Milkability	91				
Temperament	110				

OVERALL CONFORMATION		NO. OF DTRS 1285		REL 94%	
		90	100	110	120
Frame	114				
Feet & legs	95				
Udder	111				

CONFORMATION		80		90		100		110		120	
Stature	Short									Tall	115
Rib structure	Coarse									Angular	99
Chest width	Narrow									Wide	116
Body depth	Shallow									Deep	111
Rump width	Narrow pins									Wide pins	115
Rump angle	High pins									Low pins	108
Top line	Weak									Strong	103
Rear legs, side view	Straight									Sickled	92
Rear legs, rear view	Toes out									Parallel	105
Foot angle	Low									Steep	101
Bone quality	Coarse									Fine and thin	81
Hock quality	Filled									Dry	85
Fore udder attachme...	Loose									Strong	112
Rear udder height	Low									High	107
Rear udder width	Narrow									Wide	105
Udder support	Weak									Strong	96
Udder depth	Deep									High	104
Udder balance	Deep rear									Deep front	97
Teat length	Short									Long	113
Teat thickness	Thin									Thick	108
Teat placement (front)	Wide									Close	92
Teat placement (back)	Wide									Close	91