

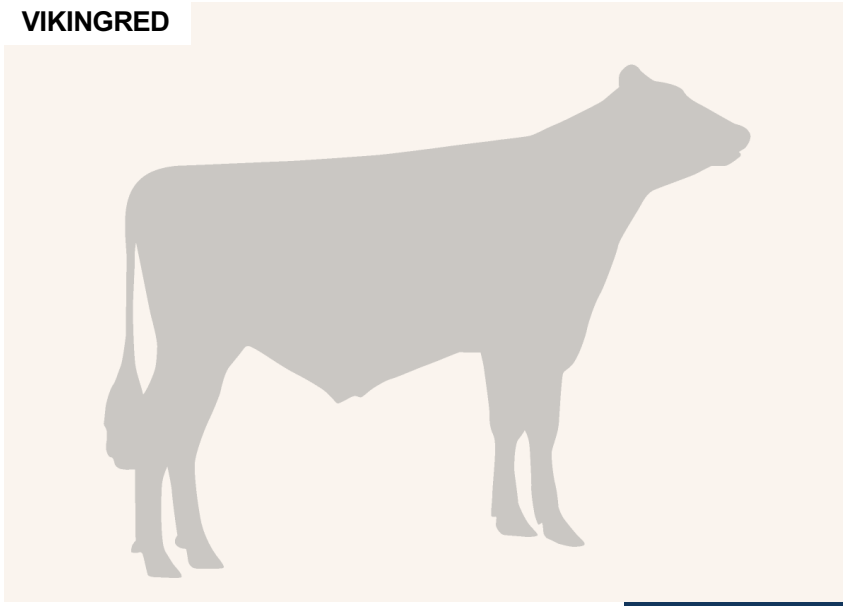
VR Lumier

FIN 48018

Beta casein: A1A2 Kappa casein: AA
 DOB.: 12/09/2017 VR Lumia x VR Wand x VR Dacapo
 Genomic Polled: POF



VIKINGRED



NTM -8

RECOMMENDED FOR

- ROBOT
- MILK
- PROCROSS LIQUID

Dam average (305 days) 10811 kg 4.43 % F / 479 kgF 3.53 % P / 382 kgP
 Est. dtr. average (305 days) 10127 kg 4.21 % F / 422 kgF 3.47 % P / 351 kgP

NTM May 2025

PRODUCTION & EFFICIENCY NO. OF DTRS 3 REL 89%

		90	100	110	120
Production	91	[Bar chart showing 91 vs 90-120]			
Milk kg	107	[Bar chart showing 107 vs 90-120]			
Protein kg	96	[Bar chart showing 96 vs 90-120]			
Protein %	81	[Bar chart showing 81 vs 90-120]			
Fat, kg	91	[Bar chart showing 91 vs 90-120]			
Fat, %	83	[Bar chart showing 83 vs 90-120]			
Growth	112	[Bar chart showing 112 vs 90-120]			
Saved feed	105	[Bar chart showing 105 vs 90-120]			
Persistency	111	[Bar chart showing 111 vs 90-120]			

FUNCTIONAL NO. OF DTRS 3 REL 85%

		90	100	110	120
Daughter fertility	100	[Bar chart showing 100 vs 90-120]			
Calving sire	103	[Bar chart showing 103 vs 90-120]			
Calving maternal	99	[Bar chart showing 99 vs 90-120]			
Udder health	105	[Bar chart showing 105 vs 90-120]			
General health	103	[Bar chart showing 103 vs 90-120]			
Longevity	109	[Bar chart showing 109 vs 90-120]			
Hoof health	86	[Bar chart showing 86 vs 90-120]			
Youngstock survival	95	[Bar chart showing 95 vs 90-120]			
Milkability	102	[Bar chart showing 102 vs 90-120]			
Temperament	99	[Bar chart showing 99 vs 90-120]			

OVERALL CONFORMATION NO. OF DTRS 3 REL 67%

		90	100	110	120
Frame	110	[Bar chart showing 110 vs 90-120]			
Feet & legs	75	[Bar chart showing 75 vs 90-120]			
Udder	102	[Bar chart showing 102 vs 90-120]			

CONFORMATION

		80	90	100	110	120		
Stature	Short	[Bar chart showing Short vs 80-120]					Tall	109
Rib structure	Coarse	[Bar chart showing Coarse vs 80-120]					Angular	92
Chest width	Narrow	[Bar chart showing Narrow vs 80-120]					Wide	119
Body depth	Shallow	[Bar chart showing Shallow vs 80-120]					Deep	99
Rump width	Narrow pins	[Bar chart showing Narrow pins vs 80-120]					Wide pins	109
Rump angle	High pins	[Bar chart showing High pins vs 80-120]					Low pins	96
Top line	Weak	[Bar chart showing Weak vs 80-120]					Strong	97
Rear legs, side view	Straight	[Bar chart showing Straight vs 80-120]					Sickled	107
Rear legs, rear view	Toes out	[Bar chart showing Toes out vs 80-120]					Parallel	98
Foot angle	Low	[Bar chart showing Low vs 80-120]					Steep	106
Bone quality	Coarse	[Bar chart showing Coarse vs 80-120]					Fine and thin	74
Hock quality	Filled	[Bar chart showing Filled vs 80-120]					Dry	76
Fore udder attachme...	Loose	[Bar chart showing Loose vs 80-120]					Strong	110
Rear udder height	Low	[Bar chart showing Low vs 80-120]					High	88
Rear udder width	Narrow	[Bar chart showing Narrow vs 80-120]					Wide	94
Udder support	Weak	[Bar chart showing Weak vs 80-120]					Strong	92
Udder depth	Deep	[Bar chart showing Deep vs 80-120]					High	110
Udder balance	Deep rear	[Bar chart showing Deep rear vs 80-120]					Deep front	94
Teat length	Short	[Bar chart showing Short vs 80-120]					Long	101
Teat thickness	Thin	[Bar chart showing Thin vs 80-120]					Thick	99
Teat placement (front)	Wide	[Bar chart showing Wide vs 80-120]					Close	80
Teat placement (back)	Wide	[Bar chart showing Wide vs 80-120]					Close	85