

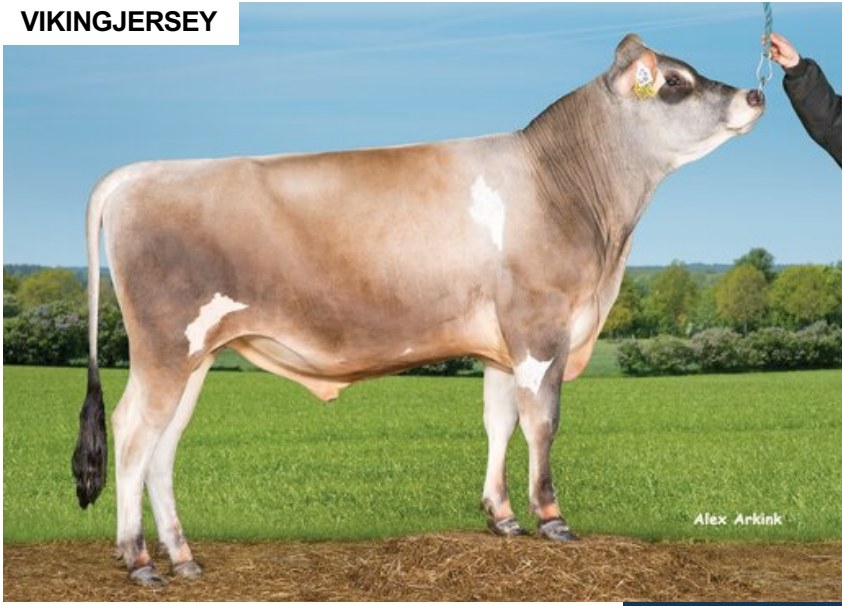
# VJ Luxi

DNK 304717

Beta casein: A2A2 Kappa casein: BB aAa: 546  
 DOB.: 17/04/2018 VJ Luck x VJ Hjort x DJ Beo  
 Proven Polled: POF



## VIKINGJERSEY



## NTM 14

### RECOMMENDED FOR

- MILK

Dam average (305 days) 8755 kg 5.87 % F / 514 kgF 4.14 % P / 362 kgP  
 Est. dtr. average (305 days) 7854 kg 6.01 % F / 469 kgF 4.35 % P / 340 kgP

### NTM October 2024

#### PRODUCTION & EFFICIENCY NO. OF DTRS 2790 REL 99%

		90	100	110	120
Production	115				
Milk kg	107				
Protein kg	113				
Protein %	104				
Fat, kg	113				
Fat, %	101				
Growth	104				
Saved feed	103				
Persistency	107				

#### FUNCTIONAL NO. OF DTRS 2546 REL 98%

		90	100	110	120
Daughter fertility	98				
Calving sire	115				
Calving maternal	99				
Udder health	98				
General health	102				
Longevity	111				
Hoof health	96				
Youngstock survival	119				
Milkability	97				
Temperament	103				

#### OVERALL CONFORMATION NO. OF DTRS 1288 REL 94%

		90	100	110	120
Frame	95				
Feet & legs	100				
Udder	97				

#### CONFORMATION

		80	90	100	110	120
Stature	Short					Tall 94
Rib structure	Coarse					Angular 99
Chest width	Narrow					Wide 103
Body depth	Shallow					Deep 96
Rump width	Narrow pins					Wide pins 103
Rump angle	High pins					Low pins 103
Top line	Weak					Strong 92
Rear legs, side view	Straight					Sickled 104
Rear legs, rear view	Toes out					Parallel 119
Foot angle	Low					Steep 90
Bone quality	Coarse					Fine and thin 94
Hock quality	Filled					Dry 101
Fore udder attachme...	Loose					Strong 104
Rear udder height	Low					High 100
Rear udder width	Narrow					Wide 100
Udder support	Weak					Strong 100
Udder depth	Deep					High 93
Udder balance	Deep rear					Deep front 91
Teat length	Short					Long 93
Teat thickness	Thin					Thick 96
Teat placement (front)	Wide					Close 105
Teat placement (back)	Wide					Close 102