

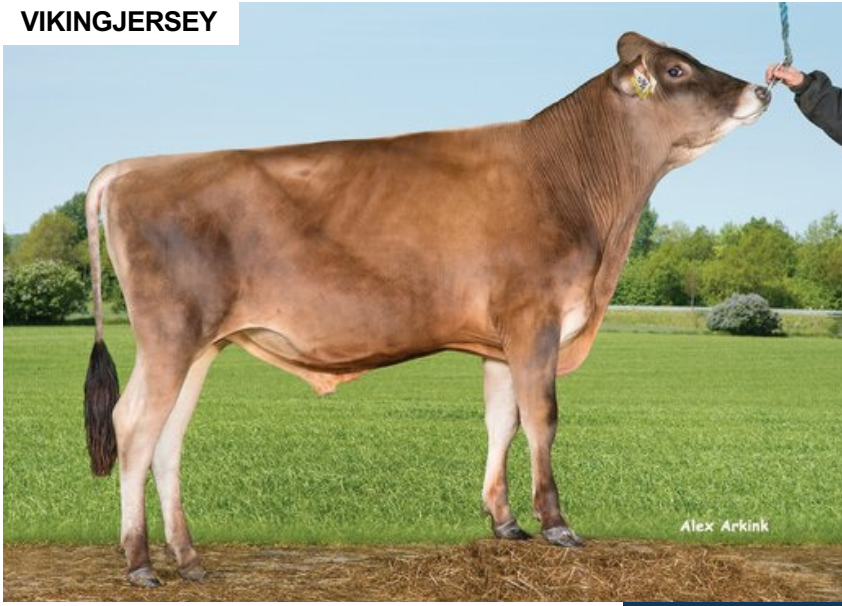
# VJ Sort

DNK 304720

Beta casein: A1A2 Kappa casein: BB aAa: 426  
 DOB.: 04/06/2018 VJ Samson x VJ Hjort x DJ Jason  
 Proven Polled: POF



## VIKINGJERSEY



## NTM 18

### RECOMMENDED FOR

- SOLIDS • FERTILITY

Dam average (305 days) 4864 kg 7.07 % F / 344 kgF 4.44 % P / 216 kgP  
 Est. dtr. average (305 days) 7596 kg 6.31 % F / 472 kgF 4.45 % P / 335 kgP

### NTM June 2024

#### PRODUCTION & EFFICIENCY NO. OF DTRS 2138 REL 99%

		90	100	110	120
Production	115				
Milk kg	98				
Protein kg	107				
Protein %	114				
Fat, kg	116				
Fat, %	113				
Growth	105				
Saved feed	86				
Persistency	84				

#### FUNCTIONAL NO. OF DTRS 1968 REL 98%

		90	100	110	120
Daughter fertility	119				
Calving sire	95				
Calving maternal	102				
Udder health	100				
General health	113				
Longevity	105				
Hoof health	96				
Youngstock survival	103				
Milkability	112				
Temperament	102				

#### OVERALL CONFORMATION NO. OF DTRS 957 REL 93%

		90	100	110	120
Frame	117				
Feet & legs	89				
Udder	104				

#### CONFORMATION

		80	90	100	110	120
Stature	Short					Tall 113
Rib structure	Coarse					Angular 97
Chest width	Narrow					Wide 124
Body depth	Shallow					Deep 106
Rump width	Narrow pins					Wide pins 110
Rump angle	High pins					Low pins 97
Top line	Weak					Strong 107
Rear legs, side view	Straight					Sickled 94
Rear legs, rear view	Toes out					Parallel 90
Foot angle	Low					Steep 110
Bone quality	Coarse					Fine and thin 78
Hock quality	Filled					Dry 80
Fore udder attachme...	Loose					Strong 111
Rear udder height	Low					High 98
Rear udder width	Narrow					Wide 101
Udder support	Weak					Strong 94
Udder depth	Deep					High 110
Udder balance	Deep rear					Deep front 97
Teat length	Short					Long 77
Teat thickness	Thin					Thick 82
Teat placement (front)	Wide					Close 116
Teat placement (back)	Wide					Close 103