

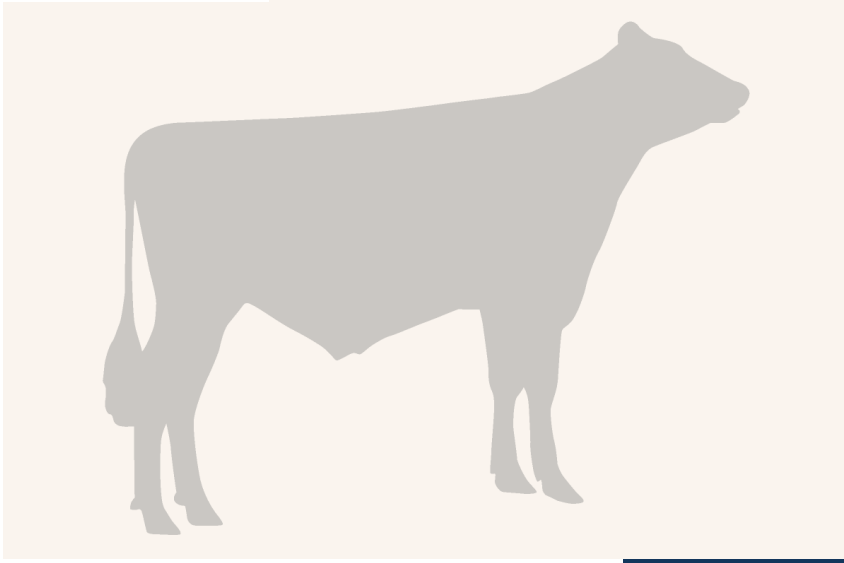
D Onside

DNK 248199

Beta casein: A2A2 Kappa casein: BB aAa: 126354
 DOB.: 06/09/2003 T Officer x Ha Manfred x B Patron
 Proven



VIKINGHOLSTEIN



NTM -15

RECOMMENDED FOR

- MILK • HOOF HEALTH
- PROCROSS LIQUID

Dam average (305 days) 13008 kg 3.88 % F / 505 kgF 3.34 % P / 435 kgP
 Est. dtr. average (305 days) 12129 kg 3.9 % F / 473 kgF 3.4 % P / 412 kgP

NTM March 2026

PRODUCTION & EFFICIENCY NO. OF DTRS 13206 REL 99%

		90	100	110	120
Production	92	[Bar chart showing production at 92]			
Milk kg	113	[Bar chart showing milk kg at 113]			
Protein kg	99	[Bar chart showing protein kg at 99]			
Protein %	79	[Bar chart showing protein % at 79]			
Fat, kg	92	[Bar chart showing fat kg at 92]			
Fat, %	83	[Bar chart showing fat % at 83]			
Growth	116	[Bar chart showing growth at 116]			
Saved feed	107	[Bar chart showing saved feed at 107]			
Persistency	107	[Bar chart showing persistency at 107]			

FUNCTIONAL NO. OF DTRS 12972 REL 99%

		90	100	110	120
Daughter fertility	93	[Bar chart showing daughter fertility at 93]			
Calving sire	92	[Bar chart showing calving sire at 92]			
Calving maternal	82	[Bar chart showing calving maternal at 82]			
Udder health	95	[Bar chart showing udder health at 95]			
General health	99	[Bar chart showing general health at 99]			
Longevity	116	[Bar chart showing longevity at 116]			
Hoof health	108	[Bar chart showing hoof health at 108]			
Youngstock survival	94	[Bar chart showing youngstock survival at 94]			
Milkability	107	[Bar chart showing milkability at 107]			
Temperament	91	[Bar chart showing temperament at 91]			

OVERALL CONFORMATION NO. OF DTRS 7098 REL 99%

		90	100	110	120
Frame	80	[Bar chart showing frame at 80]			
Feet & legs	105	[Bar chart showing feet & legs at 105]			
Udder	78	[Bar chart showing udder at 78]			

CONFORMATION

		80	90	100	110	120	
Stature	Short	[Bar chart showing stature]				Tall	67
Rib structure	Coarse	[Bar chart showing rib structure]				Angular	86
Chest width	Narrow	[Bar chart showing chest width]				Wide	105
Body depth	Shallow	[Bar chart showing body depth]				Deep	109
Rump width	Narrow pins	[Bar chart showing rump width]				Wide pins	76
Rump angle	High pins	[Bar chart showing rump angle]				Low pins	87
Top line	Weak	[Bar chart showing top line]				Strong	84
Rear legs, side view	Straight	[Bar chart showing rear legs side view]				Sickled	95
Rear legs, rear view	Toes out	[Bar chart showing rear legs rear view]				Parallel	114
Foot angle	Low	[Bar chart showing foot angle]				Steep	87
Bone quality	Coarse	[Bar chart showing bone quality]				Fine and thin	100
Hock quality	Filled	[Bar chart showing hock quality]				Dry	108
Fore udder attachme...	Loose	[Bar chart showing fore udder attachment]				Strong	91
Rear udder height	Low	[Bar chart showing rear udder height]				High	80
Rear udder width	Narrow	[Bar chart showing rear udder width]				Wide	89
Udder support	Weak	[Bar chart showing udder support]				Strong	94
Udder depth	Deep	[Bar chart showing udder depth]				High	73
Udder balance	Deep rear	[Bar chart showing udder balance]				Deep front	97
Teat length	Short	[Bar chart showing teat length]				Long	99
Teat thickness	Thin	[Bar chart showing teat thickness]				Thick	105
Teat placement (front)	Wide	[Bar chart showing teat placement front]				Close	82
Teat placement (back)	Wide	[Bar chart showing teat placement back]				Close	83