

VH Harry P

DEU 361199175

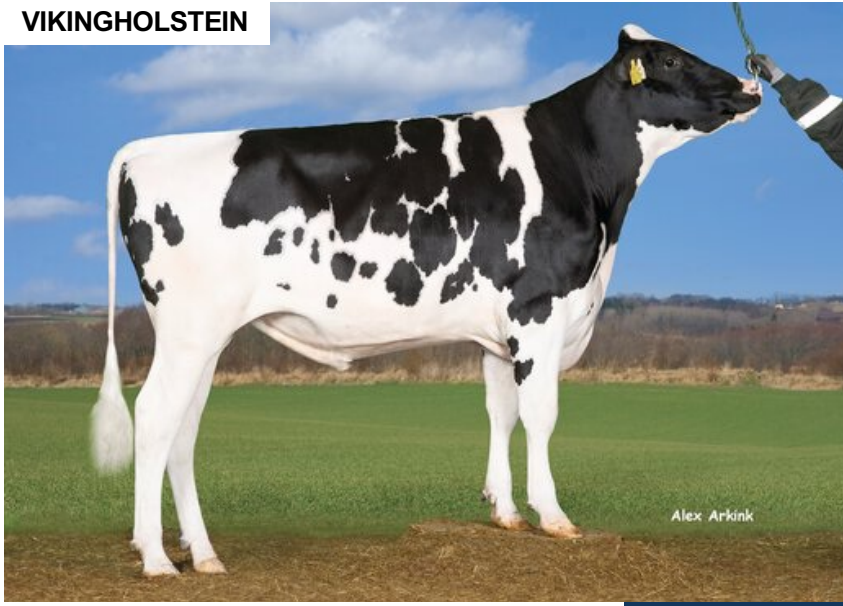
Beta casein: A1A2 Kappa casein: BB aAa: 234

DOB.: 22/11/2018 Hotspot P x EV Jetset

Proven Polled: POC



VIKINGHOLSTEIN



NTM 8

RECOMMENDED FOR

- GRAZING • SOLIDS • FERTILITY
- HOOF HEALTH • ORGANIC

Dam average (305 days) Data not available
 Est. dtr. average (305 days) 11407 kg 4.32 % F / 484 kgF 3.66 % P / 413 kgP

NTM March 2026

		NO. OF DTRS 7054				REL 99%
		90	100	110	120	
Production	103					
Milk kg	91					
Protein kg	100					
Protein %	116					
Fat, kg	101					
Fat, %	109					
Growth	92					
Saved feed	96					
Persistency	99					

		NO. OF DTRS 6554				REL 99%
		90	100	110	120	
Daughter fertility	109					
Calving sire	106					
Calving maternal	99					
Udder health	101					
General health	106					
Longevity	105					
Hoof health	107					
Youngstock survival	107					
Milkability	108					
Temperament	102					

		NO. OF DTRS 2860				REL 98%
		90	100	110	120	
Frame	101					
Feet & legs	104					
Udder	92					

		CONFORMATION						
		80	90	100	110	120		
Stature	Short						Tall	100
Rib structure	Coarse						Angular	96
Chest width	Narrow						Wide	97
Body depth	Shallow						Deep	107
Rump width	Narrow pins						Wide pins	103
Rump angle	High pins						Low pins	98
Top line	Weak						Strong	88
Rear legs, side view	Straight						Sickled	90
Rear legs, rear view	Toes out						Parallel	112
Foot angle	Low						Steep	90
Bone quality	Coarse						Fine and thin	102
Hock quality	Filled						Dry	108
Fore udder attachme...	Loose						Strong	95
Rear udder height	Low						High	96
Rear udder width	Narrow						Wide	100
Udder support	Weak						Strong	104
Udder depth	Deep						High	104
Udder balance	Deep rear						Deep front	114
Teat length	Short						Long	103
Teat thickness	Thin						Thick	104
Teat placement (front)	Wide						Close	100
Teat placement (back)	Wide						Close	114