

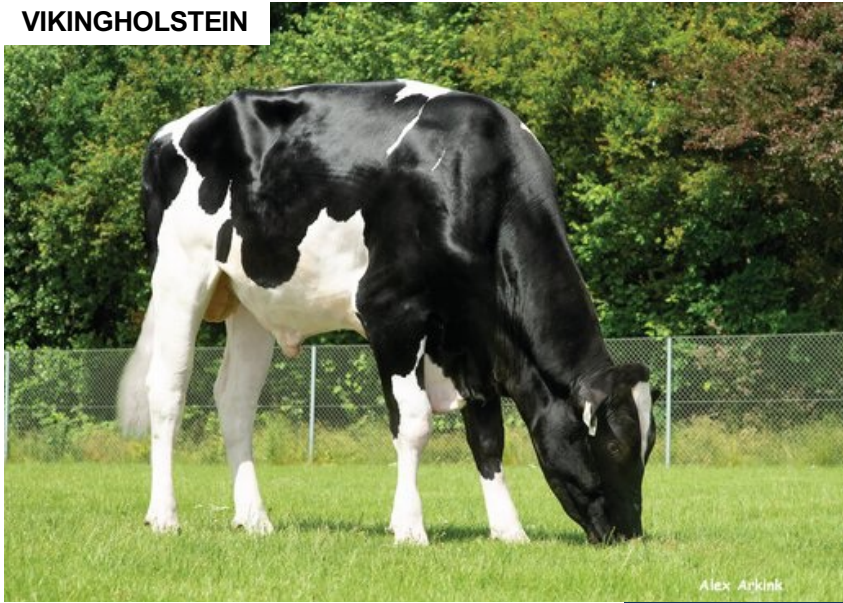
VH Stool

DEU 540640533

Beta casein: A1A2 aAa: 243
 DOB.: 07/02/2019 Skywalker x Pledge x Saloon
 Proven



VIKINGHOLSTEIN



NTM 21

RECOMMENDED FOR

- MILK • FERTILITY • PROCROSS LIQUID
- PROCROSS SOLIDS

Dam average (305 days) Data not available
 Est. dtr. average (305 days) 11765 kg 4.11 % F / 478 kgF 3.57 % P / 417 kgP

NTM June 2024

PRODUCTION & EFFICIENCY		NO. OF DTRS 3731		REL 99%	
		90	100	110	120
Production	115				
Milk kg	110				
Protein kg	118				
Protein %	110				
Fat, kg	109				
Fat, %	99				
Growth	97				
Saved feed	75				
Persistency	123				

FUNCTIONAL		NO. OF DTRS 3526		REL 98%	
		90	100	110	120
Daughter fertility	111				
Calving sire	99				
Calving maternal	108				
Udder health	99				
General health	105				
Longevity	109				
Hoof health	98				
Youngstock survival	104				
Milkability	106				
Temperament	109				

OVERALL CONFORMATION		NO. OF DTRS 1065		REL 92%	
		90	100	110	120
Frame	100				
Feet & legs	101				
Udder	117				

CONFORMATION		NO. OF DTRS		REL		
		80	90	100	110	120
Stature	Short					Tall 108
Rib structure	Coarse					Angular 105
Chest width	Narrow					Wide 92
Body depth	Shallow					Deep 94
Rump width	Narrow pins					Wide pins 97
Rump angle	High pins					Low pins 89
Top line	Weak					Strong 114
Rear legs, side view	Straight					Sickled 103
Rear legs, rear view	Toes out					Parallel 93
Foot angle	Low					Steep 89
Bone quality	Coarse					Fine and thin 115
Hock quality	Filled					Dry 107
Fore udder attachme...	Loose					Strong 114
Rear udder height	Low					High 102
Rear udder width	Narrow					Wide 100
Udder support	Weak					Strong 102
Udder depth	Deep					High 119
Udder balance	Deep rear					Deep front 91
Teat length	Short					Long 101
Teat thickness	Thin					Thick 90
Teat placement (front)	Wide					Close 104
Teat placement (back)	Wide					Close 108