

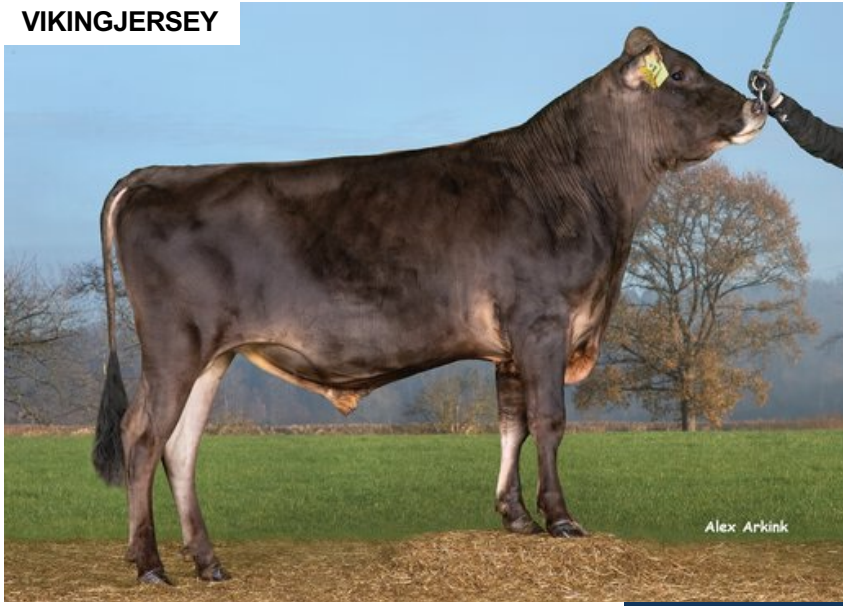
VJ Henk

DNK 304918

Beta casein: A2A2 Kappa casein: BB aAa: 462
 DOB.: 23/08/2019 VJ Higher x VJ Link x DJ Hulk
 Genomic Polled: POF



VIKINGJERSEY



NTM 18

RECOMMENDED FOR

- HEALTH
- MILK
- CALVING EASE

Dam average (305 days) 8299 kg 6.56 % F / 544 kgF 4.56 % P / 379 kgP
 Est. dtr. average (305 days) 7940 kg 5.91 % F / 470 kgF 4.27 % P / 340 kgP

NTM July 2024

PRODUCTION & EFFICIENCY NO. OF DTRS 134 REL 95%

		90	100	110	120
Production	115				
Milk kg	110				
Protein kg	112				
Protein %	95				
Fat, kg	114				
Fat, %	97				
Growth	101				
Saved feed	97				
Persistency	104				

FUNCTIONAL NO. OF DTRS 78 REL 85%

		90	100	110	120
Daughter fertility	96				
Calving sire	111				
Calving maternal	110				
Udder health	103				
General health	111				
Longevity	101				
Hoof health	102				
Youngstock survival	99				
Milkability	106				
Temperament	90				

OVERALL CONFORMATION NO. OF DTRS 19 REL 66%

		90	100	110	120
Frame	98				
Feet & legs	118				
Udder	111				

CONFORMATION

		80	90	100	110	120
Stature	Short					Tall 108
Rib structure	Coarse					Angular 101
Chest width	Narrow					Wide 97
Body depth	Shallow					Deep 86
Rump width	Narrow pins					Wide pins 99
Rump angle	High pins					Low pins 107
Top line	Weak					Strong 96
Rear legs, side view	Straight					Sickled 83
Rear legs, rear view	Toes out					Parallel 108
Foot angle	Low					Steep 114
Bone quality	Coarse					Fine and thin 114
Hock quality	Filled					Dry 92
Fore udder attachme...	Loose					Strong 105
Rear udder height	Low					High 98
Rear udder width	Narrow					Wide 98
Udder support	Weak					Strong 92
Udder depth	Deep					High 113
Udder balance	Deep rear					Deep front 114
Teat length	Short					Long 116
Teat thickness	Thin					Thick 121
Teat placement (front)	Wide					Close 96
Teat placement (back)	Wide					Close 99