

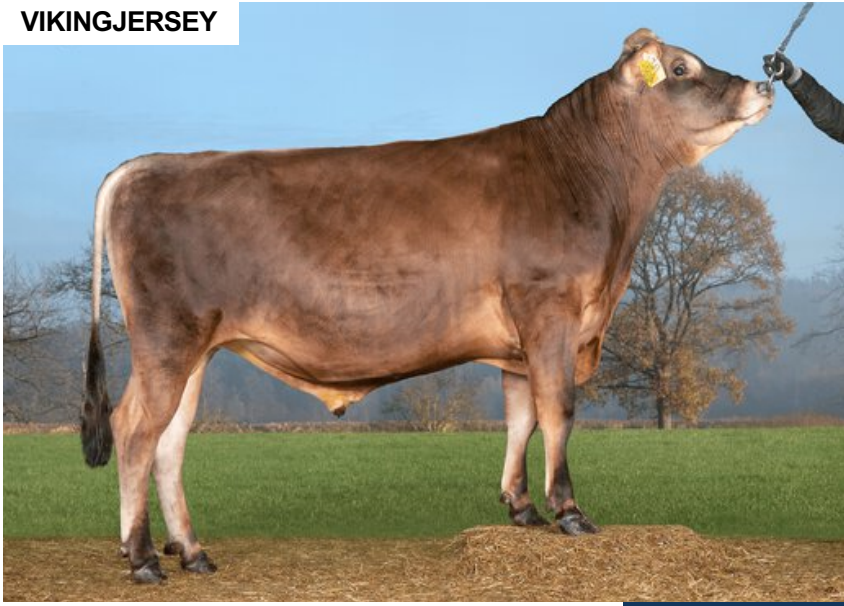
VJ Giga

DNK 304953

Beta casein: A2A2 Kappa casein: AB aAa: 543
 DOB.: 04/09/2019 VJ Giant x VJ Hjort x DJ Holmer
 Proven Polled: POF



VIKINGJERSEY



NTM 4

RECOMMENDED FOR

- ROBOT
- CALVING EASE

Dam average (305 days) 8762 kg 6.07 % F / 532 kgF 4.33 % P / 379 kgP
 Est. dtr. average (305 days) 7778 kg 6.07 % F / 470 kgF 4.41 % P / 342 kgP

NTM March 2026

PRODUCTION & EFFICIENCY NO. OF DTRS 2443 REL 99%

		90	100	110	120
Production	106				
Milk kg	100				
Protein kg	104				
Protein %	104				
Fat, kg	106				
Fat, %	103				
Growth	122				+
Saved feed	85				
Persistency	98				

FUNCTIONAL NO. OF DTRS 2077 REL 98%

		90	100	110	120
Daughter fertility	101				
Calving sire	108				
Calving maternal	100				
Udder health	102				
General health	96				
Longevity	100				
Hoof health	79				
Youngstock survival	117				
Milkability	108				
Temperament	101				

OVERALL CONFORMATION NO. OF DTRS 1124 REL 94%

		90	100	110	120
Frame	87				
Feet & legs	88				
Udder	110				

CONFORMATION

		80	90	100	110	120
Stature	Short					Tall 102
Rib structure	Coarse					Angular 82
Chest width	Narrow					Wide 112
Body depth	Shallow					Deep 93
Rump width	Narrow pins					Wide pins 110
Rump angle	High pins					Low pins 91
Top line	Weak					Strong 80
Rear legs, side view	Straight					Sickled 107
Rear legs, rear view	Toes out					Parallel 90
Foot angle	Low					Steep 110
Bone quality	Coarse					Fine and thin 84
Hock quality	Filled					Dry 85
Fore udder attachme...	Loose					Strong 112
Rear udder height	Low					High 96
Rear udder width	Narrow					Wide 95
Udder support	Weak					Strong 93
Udder depth	Deep					High 109
Udder balance	Deep rear					Deep front 89
Teat length	Short					Long 96
Teat thickness	Thin					Thick 104
Teat placement (front)	Wide					Close 99
Teat placement (back)	Wide					Close 94