

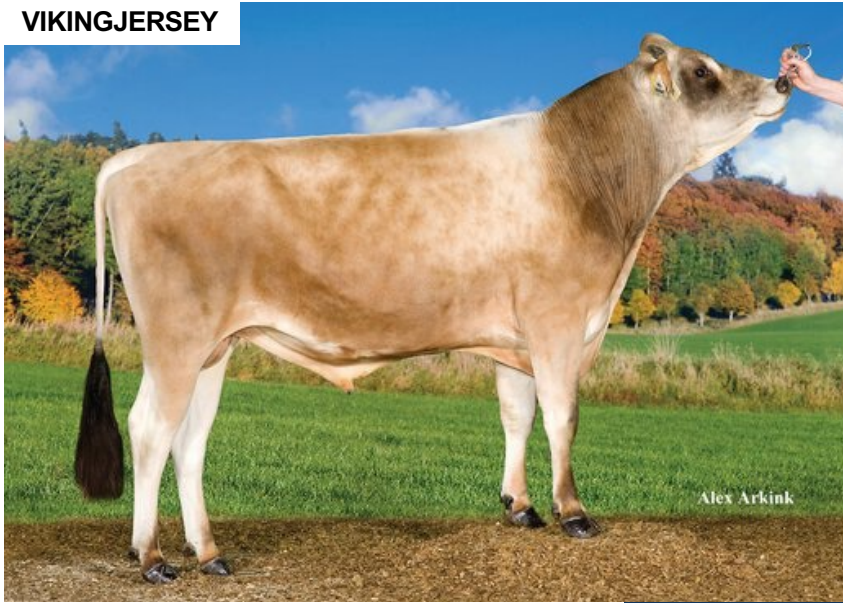
# VJ Hjort

DNK 303828

Beta casein: A2A2 Kappa casein: AB aAa: 432  
 DOB.: 27/09/2012 VJ Husky x DJ Zuma x DJ Basse  
 Proven



## VIKINGJERSEY



## NTM -5

### RECOMMENDED FOR

- MILK • HOOF HEALTH

Dam average (305 days) 7789 kg 5.94 % F / 463 kgF 4.07 % P / 317 kgP  
 Est. dtr. average (305 days) 8007 kg 5.87 % F / 470 kgF 4.32 % P / 346 kgP

### NTM March 2026

PRODUCTION & EFFICIENCY		NO. OF DTRS 1111		REL 99%	
		90	100	110	120
Production	107				
Milk kg	108				
Protein kg	108				
Protein %	95				
Fat, kg	106				
Fat, %	95				
Growth	94				
Saved feed	106				
Persistency	101				

FUNCTIONAL		NO. OF DTRS 944		REL 98%	
		90	100	110	120
Daughter fertility	87				
Calving sire	104				
Calving maternal	107				
Udder health	88				
General health	85				
Longevity	92				
Hoof health	105				
Youngstock survival	112				
Milkability	93				
Temperament	114				

OVERALL CONFORMATION		NO. OF DTRS 680		REL 95%	
		90	100	110	120
Frame	102				
Feet & legs	101				
Udder	80				

CONFORMATION		80		90		100		110		120	
Stature	Short									Tall	100
Rib structure	Coarse									Angular	118
Chest width	Narrow									Wide	93
Body depth	Shallow									Deep	115
Rump width	Narrow pins									Wide pins	104
Rump angle	High pins									Low pins	119
Top line	Weak									Strong	104
Rear legs, side view	Straight									Sickled	91
Rear legs, rear view	Toes out									Parallel	108
Foot angle	Low									Steep	99
Bone quality	Coarse									Fine and thin	96
Hock quality	Filled									Dry	89
Fore udder attachme...	Loose									Strong	91
Rear udder height	Low									High	87
Rear udder width	Narrow									Wide	100
Udder support	Weak									Strong	86
Udder depth	Deep									High	80
Udder balance	Deep rear									Deep front	80
Teat length	Short									Long	89
Teat thickness	Thin									Thick	99
Teat placement (front)	Wide									Close	109
Teat placement (back)	Wide									Close	100