

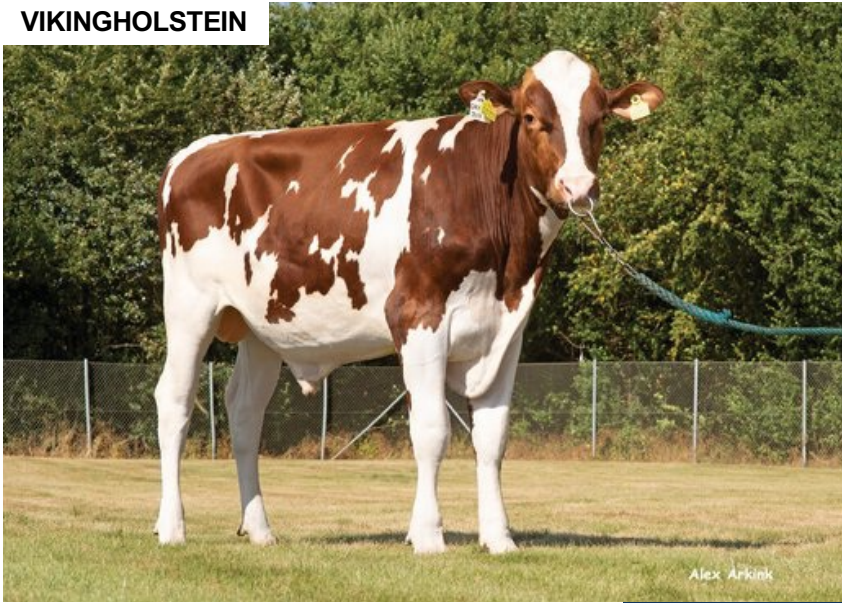
VH DryPRed

DNK 261162

Beta casein: A1A2 Kappa casein: BB aAa: 432
 DOB.: 16/09/2019 Dream P RC x VH Dent RC x VH Mozart
 Proven Polled: POC



VIKINGHOLSTEIN



NTM 6

RECOMMENDED FOR

- GRAZING • SOLIDS • FERTILITY
- HOOF HEALTH • PROCROSS LIQUID
- PROCROSS SOLIDS

Dam average (305 days) 14022 kg 4.15 % F / 582 kgF 3.7 % P / 519 kgP
 Est. dtr. average (305 days) 11109 kg 4.28 % F / 468 kgF 3.63 % P / 399 kgP

NTM July 2024

PRODUCTION & EFFICIENCY NO. OF DTRS 931 REL 98%

	90	100	110	120
Production	103			
Milk kg	90			
Protein kg	100			
Protein %	118			
Fat, kg	101			
Fat, %	110			
Growth	86			
Saved feed	103			
Persistency	107			

FUNCTIONAL NO. OF DTRS 790 REL 95%

	90	100	110	120
Daughter fertility	106			
Calving sire	102			
Calving maternal	107			
Udder health	98			
General health	103			
Longevity	107			
Hoof health	105			
Youngstock survival	102			
Milkability	85			
Temperament	88			

OVERALL CONFORMATION NO. OF DTRS 203 REL 87%

	90	100	110	120
Frame	97			
Feet & legs	106			
Udder	105			

CONFORMATION

	80	90	100	110	120
Stature	Short				Tall 103
Rib structure	Coarse				Angular 110
Chest width	Narrow				Wide 90
Body depth	Shallow				Deep 94
Rump width	Narrow pins				Wide pins 96
Rump angle	High pins				Low pins 91
Top line	Weak				Strong 94
Rear legs, side view	Straight				Sickled 103
Rear legs, rear view	Toes out				Parallel 108
Foot angle	Low				Steep 101
Bone quality	Coarse				Fine and thin 109
Hock quality	Filled				Dry 95
Fore udder attachme...	Loose				Strong 105
Rear udder height	Low				High 120
Rear udder width	Narrow				Wide 109
Udder support	Weak				Strong 100
Udder depth	Deep				High 113
Udder balance	Deep rear				Deep front 131
Teat length	Short				Long 91
Teat thickness	Thin				Thick 92
Teat placement (front)	Wide				Close 111
Teat placement (back)	Wide				Close 105